

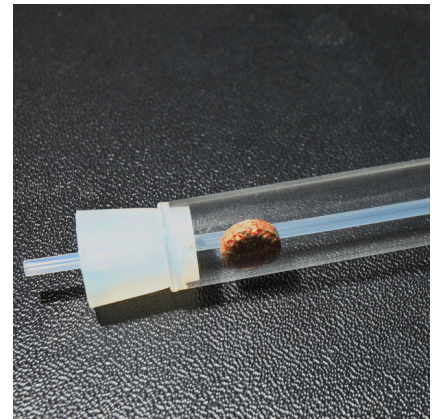




JBL PlaCollect

Planaria trap to combat flatworms

Suitable for:  



- Convenient and effective way to catch flatworms (planaria) without using chemicals
- Equip trap with food bait (JBL NovoTab), use suction pad and cord to hang it at an angle over the bottom and empty trap the following day
- Convenient emptying of the trap: open lower plug and upper screw top and rinse under running water
- Completely non-toxic in freshwater and marine water
- Package content: 1 complete planaria trap (13 cm long) with transparent cord and suction pad for slanted positioning



JBL PlaCollect



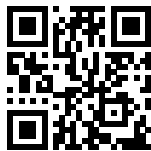
Product information

Flatworms (Platyhelminthes):

To this class of animals belong the unpopular planaria which sometimes massively reproduce in aquariums and then can become a disturbing pest. They mostly lead a hidden existence and appear only at night. After using a planaria trap many people are surprised how many flatworms were present in their aquariums! Since chemical means against planaria have mostly unwanted side effects, the JBL planaria trap is a very good alternative without harmful side effects!

Flatworms in marine water:

Flatworms in marine water can look very beautiful, such as slugs. But they can also cause problems for corals, when they increase alarmingly and infest the corals. There are Turbellaria which, extremely well camouflaged, even can't be found on a closer look. This also includes e.g. the Acropora-eating flatworm which can infest stony corals and lead to serious damage. Through an iodine bath of the affected coral outside the aquarium (2 ml Betaisodona/l) the Turbellaria will be paralysed and can be flushed away with a strong water jet. The wrasse *Pseudocheilinus hexataenia* is considered as the recommended natural enemy of choice, as it can even recognise clutches of worms to eat them.

| Further information | |
|-----------------------|---|
| FAQ | ✓ |
| Blog | ✓ |
| Press | ✓ |
| Laboratory/calculator | ✗ |
| Worth reading | ✓ |
| Spare parts | ✗ |
| Video | ✗ |
| GarantiePlus | ✗ |
| Instructions | ✓ |
| QR code |  |





JBL PlaCollect

Product details

| Article data | |
|--------------------------|--------------------|
| Product name | JBL PlanariCollect |
| Art. No. | 6145500 |
| EAN number | 4014162614551 |
| EAN as barcode | |
| Content | 1 kit |
| - | - |
| Expiry months | - |
| RRP incl. VAT | 15,46 € |
| Base price | - |
| Nominal filling quantity | - |
| Base quantity | 1 |
| Gross weight | 59 g |
| Net weight | 31 g |
| Weight change | - |

| Disposal | |
|-------------------------|--------------------|
| Product name | JBL PlanariCollect |
| Art. No. | 6145500 |
| Green dot | ✓ |
| Group electronic waste | - |
| Disposal weight | - |
| Battery type | - |
| Battery return | - |
| Battery rechargeable | - |
| Disposal weight battery | - |
| Non-returnable glass | - |
| PPK | 27 g |
| Plastic small | - |
| Plastic large | - |
| Disposal weight metal | 0 g |

| Features | |
|----------------|--|
| Product name | JBL PlanariCollect |
| Art. No. | 6145500 |
| Animal species | Arowana, Axolotl, Barbels, Bettas, Blowfish, Catfish, Cichlids (South America), Corals, Crayfish, Danions, Discus, Dwarf shrimps, Flowerhorn, Gobies, Goldfish, Gouramis, Guppy, Juvenile fish, Killifish, Livebearers, Loaches, Mussels, Panchaxes, Rainbowfish, Snails, Tetra, Veiltails, freshwater butterflyfish |
| Animal size | For all animal sizes |





| Features | |
|----------------------|---------------------|
| Animal age group | All aquarium fish |
| Volume of habitat | For all aquariums |
| Material | glass |
| Food type | - |
| Colour | white / transparent |
| Dosage | - |
| Transport conditions | - |





JBL PlaCollect

| Electronic label / illuminant | |
|-------------------------------|--------------------|
| Product name | JBL PlanariCollect |
| Art. No. | 6145500 |
| Ambient temperature | - |
| Start time | - |
| Mercury | - |
| Tube length | - |
| Service life | - |
| Lumen | - |
| CRI value | - |
| Dimmable | - |
| Switching cycles | - |
| PAR value | - |
| Energy efficiency class | - |
| UV-A | - |
| UV-B | - |
| UV-C | - |
| Colour temperature | - |
| Base designation | - |

| Technical data | |
|-------------------------------|--------------------|
| Product name | JBL PlanariCollect |
| Art. No. | 6145500 |
| Range in litres | - |
| Range from - to | - |
| Range in days | - |
| Range tank length | - |
| Output in watts | - |
| Output per hour | - |
| Output per day | - |
| Height | - |
| Length | - |
| Width | - |
| Diameter | - |
| Voltage | - |
| For | - |
| T8 26mm (watt) | - |
| T5 16mm (watt) | - |
| Size | - |
| Content for | - |
| Filter container volume | - |
| Volume filter media | - |
| Hose connections pressure/out | - |
| Hose connections suction/in | - |
| Delivery head | - |





JBL PlaCollect

| | |
|------------------|---|
| Food type | - |
| Sub product type | - |
| Dosing | - |





Additional information for the specialist trade sector

| Article data | |
|----------------------|----------------------|
| Product name | JBL PlanariCollect |
| Art. No. | 6145500 |
| VAT | 25% |
| Sales unit (SU) | 3 |
| Volume packaging | 0.28l |
| Dimensions (l/w/h) | 45 mm/105 mm/180 mm |
| Layer | 180 |
| Pallet | 720 |
| Category of products | 2 |
| Customs tariff | 95079000 |
| Country of origin | DE |
| Type of packaging | Faltschachtel/Karton |

| PU 1 data | |
|------------------|--------------------|
| Product name | JBL PlanariCollect |
| Art. No. | 6145500 |
| PU 1 material | cardboard gr |
| PU 1 weight | 3.5 g |
| PU 1 length | 105 mm |
| PU 1 width/depth | 130 mm |
| PU 1 height | 180 mm |

| PU 2 data | |
|------------------|--------------------|
| Product name | JBL PlanariCollect |
| Art. No. | 6145500 |
| PU 2 material | cardboard gr |
| PU 2 weight | 540 g |
| PU 2 length | 400 mm |
| PU 2 width/depth | 400 mm |
| PU 2 height | 350 mm |

| Trade data | |
|-------------------|--------------------|
| Product name | JBL PlanariCollect |
| Art. No. | 6145500 |
| Till receipt text | JBL PlaCollect |
| Shelf placement | - |