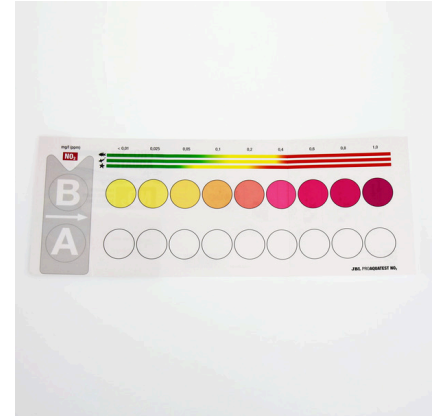




JBL PROAQUATEST NO2 Nitrite

Quick test to determine the nitrite content

Suitable for:



- Nitrite is a toxic nitrogen compound, which is formed when the bacterial balance is disturbed or when setting up a new aquarium. The test shows the exact nitrite content of the water
- Laboratory comparator system to compensate the inherent water colour: fill glass vials with sample water, add reagents to one vial, place vials in holder, read values off colour chart
- Use: when setting up a new freshwater aquarium: daily for 3 weeks. For initial setup with marine water: once a week. For use with fish diseases or fish deaths
- You will find detailed information and troubleshooting tips about water analysis on the JBL website in Essentials/Aquarium or Pond
- Package contents: 1 nitrite test for approx. 50 measurements, incl. 2 reagents, 2 glass vials with screw caps, syringe, comparator block and colour scale. Reagent refill separately available

You may also be interested in

You can find a complete overview here: <https://www.jbl.de/qr/24123>



JBL PROAQUATEST COMBISET Plus Fe

Test case with most important water tests + iron test



JBL PROAQUATEST COMBISET Plus NH₄

Test case with most important water tests + NH₄ test



JBL PROAQUATEST LAB

Test case with 13 water tests for freshwater analysis



JBL PROAQUATEST LAB Marin

Professional test case for marine water analysis





JBL PROAQUATEST NO2 Nitrite

 Spare parts



JBL component set for water tests



JBL PROAQUATEST range colour charts





JBL PROAQUATEST NO2 Nitrite

Product information

Healthy aquarium/healthy pond with conditions close to nature

The right water values are dependent on the fish stock and the plants in the aquarium/pond. Even if the water looks clear it can be contaminated. With bad values diseases or algae can appear in the aquarium/pond. To maintain a healthy aquarium/pond with conditions close to nature it is important to check and adapt the water values regularly.

For each water analysis JBL provides water tests in the form of quick tests or colour change tests. These determine a certain value or several values in one go. With these water tests you can recognise algae problems and negative nitrate, nitrite, potassium, magnesium values etc.

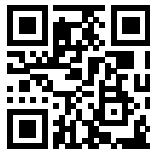
Why test:

Nitrite is produced when bacteria degrade protein and ammonium. It is normally processed further into non-toxic nitrate. In aquarium and pond water nitrite (NO₂) should not be measurable. If nitrate is measurable, it is a sign that the bacterial degradation process has been disturbed. From a concentration of 0.4 mg/l onwards it is dangerous or even fatal for fish, because nitrite blocks the transport of oxygen in the blood. This can be remedied by water changes and good bacteria starters, such as JBL Denitrol and JBL BactoPond.

Recommended nitrite values:

- Freshwater aquarium (community aquarium): 0-0.2 mg/l
- Lake Malawi/Lake Tanganyika aquarium: 0-0.2 mg/l
- Plant aquarium with few fish (aquascaping): 0-0.2 mg/l
- Marine aquarium: 0-0.2 mg/l
- Pond: 0-0.2 mg/l

You can analyse the water values you have measured in the JBL Online Laboratory free of charge and receive recommendations.

Further information	
FAQ	✓
Blog	✓
Press	✓
Laboratory/calculator	✗
Worth reading	✓
Spare parts	✓
Video	✓
GarantiePlus	✗
Instructions	✓
QR code	





JBL PROAQUATEST NO2 Nitrite



Product details

Article data		
Product name	JBL PROAQUATEST NO2 Nitrite	JBL PROAQUATEST NO2 REFILL
Art. No.	2412300	2412400
EAN number	4014162241238	4014162241245
EAN as barcode		
For	50 Tests	Refill
-	-	-
Expiry months	36	36
RRP incl. VAT	17,99 €	8,94 €
Base price	-	-
Nominal filling quantity	-	-
Base quantity	1	1
Gross weight	144.5 g	59 g
Net weight	97 g	31 g
Weight change	-	-

Disposal		
Product name	JBL PROAQUATEST NO2 Nitrite	JBL PROAQUATEST NO2 REFILL
Art. No.	2412300	2412400
Green dot	✓	✓
Group electronic waste	-	-
Disposal weight	-	-
Battery type	-	-
Battery return	-	-
Battery rechargeable	-	-
Disposal weight battery	-	-
Non-returnable glass	-	-
PPK	27 g	7.5 g
Plastic small	20 g	20 g
Plastic large	-	-
Disposal weight metal	0 g	0 g

Features		
Product name	JBL PROAQUATEST NO2 Nitrite	JBL PROAQUATEST NO2 REFILL
Art. No.	2412300	2412400





Features		
Animal species	Armored catfish, Arowana, Axolotl, Barbels, Bettas, Bichirs/ reedfish, Blowfish, Catfish, Cichlids (South America), Clawed frogs, Clawed shrimps, Corals, Crayfish, Crustaceans, Danions, Discus, Dwarf crayfish, Dwarf shrimps, Flowerhorn, Gill maggots, Gobies, Goldfish, Gouramis, Guppy, Juvenile fish, Killifish, Livebearers, Loaches, Mussels, Newts, Panchaxes, Rainbowfish, Snails, Spiny eels, Terrapins, Tetra, Tropical terrapins, Veiltails, blood parrot cichlids, freshwater butterflyfish, turtle	Armored catfish, Arowana, Axolotl, Barbels, Bettas, Bichirs/ reedfish, Blowfish, Catfish, Cichlids (South America), Clawed frogs, Clawed shrimps, Corals, Crayfish, Crustaceans, Danions, Discus, Dwarf crayfish, Dwarf shrimps, Flowerhorn, Gill maggots, Gobies, Goldfish, Gouramis, Guppy, Juvenile fish, Killifish, Livebearers, Loaches, Mussels, Newts, Panchaxes, Rainbowfish, Snails, Spiny eels, Terrapins, Tetra, Tropical terrapins, Veiltails, blood parrot cichlids, freshwater butterflyfish, turtle
Animal size	For all animal sizes	For all animal sizes
Animal age group	All aquarium fish	All aquarium fish
Volume of habitat	-	-
Material	Reagent(s) in plastic bottle(s) and/ or glass bottle(s) + plastic and/or glass accessories. REFILL: reagent (s) without accessories.	Reagent(s) in plastic bottle(s) and/ or glass bottle(s) + plastic and/or glass accessories. REFILL: reagent (s) without accessories.
Food type	-	-
Colour	white / transparent / black	white / transparent / black
Dosage	See instructions	See instructions
Transport conditions	-	-





JBL PROAQUATEST NO2 Nitrite

Electronic label / illuminant		
Product name	JBL PROAQUATEST NO2 Nitrite	JBL PROAQUATEST NO2 REFILL
Art. No.	2412300	2412400
Ambient temperature	-	-
Start time	-	-
Mercury	-	-
Tube length	-	-
Service life	-	-
Lumen	-	-
CRI value	-	-
Dimmable	-	-
Switching cycles	-	-
PAR value	-	-
Energy efficiency class	-	-
UV-A	-	-
UV-B	-	-
UV-C	-	-
Colour temperature	-	-
Base designation	-	-

Technical data		
Product name	JBL PROAQUATEST NO2 Nitrite	JBL PROAQUATEST NO2 REFILL
Art. No.	2412300	2412400
Range in litres	-	-
Range from - to	-	-
Range in days	-	-
Range tank length	-	-
Output in watts	-	-
Output per hour	-	-
Output per day	-	-
Height	175 mm	64 mm
Length	106 mm	48 mm
Width	43 mm	24 mm
Diameter	-	-
Voltage	-	-
For	-	-
T8 26mm (watt)	-	-
T5 16mm (watt)	-	-
Size	-	-
Content for	-	-
Filter container volume	-	-
Volume filter media	-	-
Hose connections pressure/out	-	-
Hose connections suction/in	-	-
Delivery head	-	-





JBL PROAQUATEST NO2 Nitrite



Food type	-
Sub product type	-
Dosing	See instructions








JBL PROAQUATEST NO2 Nitrite

Safety information

JBL NO2 1 - safety information in accordance with GHS	
Signal word	Danger
Hazard symbol	 
Risk phrase	H226: Flammable liquid and vapour. H314: Causes severe skin burns and eye damage. H318: Causes serious eye damage.
safety note	P101: If medical advice is needed, have product container or label at hand. P102: Keep out of reach of children. P303+P361+P353: IF ON SKIN (or hair): Take off immediately all contaminated clothing. Rinse skin with water [or shower]. P305+P351+P338: IF IN EYES: Rinse cautiously with water for several minutes. Remove contact lenses, if present and easy to do. Continue rinsing. P501a: Dispose of contents/container in accordance with local regulations.
Hazard-determining component	64-19-7: Acetic acid

JBL NO2 2 - safety information in accordance with GHS	
Signal word	Warning
Hazard symbol	 
Risk phrase	H226: Flammable liquid and vapour. H319: Causes serious eye irritation.
safety note	P101: If medical advice is needed, have product container or label at hand. P102: Keep out of reach of children. P303+P361+P353: IF ON SKIN (or hair): Take off immediately all contaminated clothing. Rinse skin with water [or shower]. P305+P351+P338: IF IN EYES: Rinse cautiously with water for several minutes. Remove contact lenses, if present and easy to do. Continue rinsing.

Further safety information	
Safety instructions	✓
QR code	





Additional information for the specialist trade sector

Article data		
Product name	JBL PROAQUATEST NO2 Nitrite	JBL PROAQUATEST NO2 REFILL
Art. No.	2412300	2412400
VAT	19%	19%
Sales unit (SU)	3	1
Volume packaging	0.8l	0.57l
Dimensions (l/w/h)	43 mm/106 mm/175 mm	30 mm/110 mm/175 mm
Layer	240	800
Pallet	720	2400
Category of products	1	1
Customs tariff	38221100	38221100
Country of origin	DE	DE
Type of packaging	Faltschachtel/Karton	Skin / blister card packaging

PU 1 data		
Product name	JBL PROAQUATEST NO2 Nitrite	JBL PROAQUATEST NO2 REFILL
Art. No.	2412300	2412400
PU 1 material	film gr	cardboard gr
PU 1 weight	3.5 g	660 g
PU 1 length	106 mm	580 mm
PU 1 width/depth	130 mm	390 mm
PU 1 height	180 mm	310 mm

PU 2 data		
Product name	JBL PROAQUATEST NO2 Nitrite	JBL PROAQUATEST NO2 REFILL
Art. No.	2412300	2412400
PU 2 material	cardboard gr	None
PU 2 weight	540 g	-
PU 2 length	400 mm	-
PU 2 width/depth	400 mm	-
PU 2 height	350 mm	-

Trade data		
Product name	JBL PROAQUATEST NO2 Nitrite	JBL PROAQUATEST NO2 REFILL
Art. No.	2412300	2412400
Till receipt text	Test NO2	Refill NO2
Shelf placement	Test shelf, water treatment troubleshooting	Test shelf, water treatment troubleshooting