

JBL

First aid for your aquarium fish
Diseases and deficiency symptoms
identified in good time.



White spot



Ahead
through research



White spot

JBL Punktol® Plus

is effective against:

single-celled skin parasites
in freshwater and saltwater e.g.:

Ichthyophthirius,
Ichthyobodo (Costia),
Heteropolaria,
Chilodonella,
Tetrahymena,
Trichodina,
Glossatella,
Cryptocaryon,
Brooklynella,
Uronema.

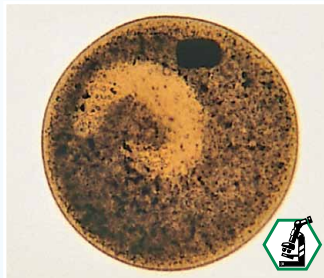
Suitable for:



! Please consult your
pet shop sales advisor



Ichthyophthirius



Ichthyo pathogen



Cryptocaryon

Danger of confusion

Oodinium

(see tab Oodinium)



Usage instructions: JBL Punktol® Plus is added to the aquarium water.

Remove any active carbon from the filter prior to and during use. Switch off any UV-C appliances and CO₂-fertilisation. Additionally in saltwater switch off any skimmers and ozonisers. 50 % of the water needs to be changed prior to application. Use an air pump with diffuser to aerate the tank during the treatment. JBL Punktol® Plus is best used in the morning and the animals observed throughout its application.

Name of remedy	Treatment cycle sufficient for:	Single treatment sufficient for:
JBL Punktol® Plus 125	125 l	1000 l
JBL Punktol® Plus 250	250 l	2000 l
JBL Punktol® Plus 1500	1500 l	12500 l
JBL Punktol® red Plus 125	125 l (in cold water)	1000 l

Read the instruction leaflet which is attached to the package carefully before the treatment.



JBL Punktol® Plus 125:
100 ml solution as an additive for 1000 l of tank water for ornamental fish in fresh water and salt water.
100 ml contain:
Malachite green oxalate 60 mg
Methylthioninium chloride 80 mg



JBL Punktol® Plus 250:
100 ml solution as an additive for 2000 l of tank water for ornamental fish in fresh water and salt water.
100 ml contain:
Malachite green oxalate 120 mg
Methylthioninium chloride 160 mg



JBL Punktol® Plus 1500:
50 ml solution as an additive for 12500 l of tank water for ornamental fish in fresh water and salt water.
100 ml contain:
Malachite green oxalate 1500 mg
Methylthioninium chloride 2000 mg



JBL Punktol® red Plus 125:
100 ml solution as an additive for 1000 l of tank water for ornamental fish in cold fresh water.
100 ml contain:
Malachite green oxalate 60 mg
Methylthioninium chloride 60 mg

Oodinium

Oodinium

JBL Oodinol® Plus 250

is effective against:

Oodinium pathogen,
Amyloodinium,
Piscinoodinium,
Ichthyobodo.

Suitable for:



Freshwater oodinium



Saltwater oodinium



Oodinium pathogen

Danger of confusion

Cryptocaryon

(see tab White spot)



Ichthyophthirius

(see tab White spot)



Ichthyo pathogen

(see tab White spot)

Usage instructions: JBL Oodinol® Plus 250 is added to the aquarium water.

Remove any active carbon from the filter prior to and during use. Switch off any UV-C appliances and CO₂-fertilisation. Additionally in saltwater switch off any skimmers and ozonisers. 50 % of the water needs to be changed prior to application. Use an air pump with diffuser to aerate the tank during the treatment. JBL Oodinol® Plus 250 is best used in the morning and the animals observed throughout its application.

JBL Oodinol® Plus 250 contains copper to fight dinoflagellates of the oodinium group reliably. Copper is NOT tolerated by any invertebrates!

Name of remedy	Treatment cycle sufficient for:	Single treatment sufficient for:
JBL Oodinol® Plus 250	250 l	1000 l

Read the instruction leaflet which is attached to the package carefully before the treatment.

Bacterial infection



JBL Oodinol® Plus 250:
100 ml solution as an additive for 1000 l of tank water for ornamental fish in fresh water and salt water.
100 ml contain:
Copper sulphate pentahydrate 1180 mg
Methylthioninium chloride 80 mg

Bacterial infection

JBL Ektol®fluid Plus

is effective against:

Fin rot
Mouth rot
External bacterial infection
Aeromonas bacteria
Pseudomonas bacteria
Columnaris bacteria



Fin rot



Mouth rot

Manufacturer: JBL GmbH & Co. KG, Dieselstraße 3, 67141 Neuhofen,
+49 6236 41800, Made in Germany, www.JBL.de

JBL Ektol®bac Plus

is effective against:

Bacterial infections of all kind
Open ulcers
Punctiform bleeding
Bloodshot areas
Boil-like ulcers
Protruding gill covers
Discoloured gills
Accelerated breathing
Popeyes



External bacterial infection



Open ulcers

Manufacturer: JBL GmbH & Co. KG, Dieselstraße 3, 67141 Neuhofen,
+49 6236 41800, Made in Germany, www.JBL.de

Usage instructions: JBL Ektol® fluid Plus is added to the aquarium water.

Remove any active carbon from the filter prior to and during use. Switch off any UV-C appliances and CO₂-fertilisation. Additionally in saltwater switch off any skimmers and ozonisers. 50 % of the water needs to be changed prior to application. Use an air pump with diffuser to aerate the tank during the treatment. JBL Ektol® fluid Plus is best used in the morning and the animals observed throughout its application.



JBL Ektol® fluid Plus 125:
100 ml solution as an additive for 250 l of tank water for ornamental fish in fresh water
100 ml contain:
Benzalkonium chloride 217,5 mg
Methylene blue 50 mg



JBL Ektol® fluid Plus 250:
100 ml solution as an additive for 500 l of tank water for ornamental fish in fresh water
100 ml contain:
Benzalkonium chloride 435 mg
Methylene blue 100 mg

Name of remedy	Treatment cycle sufficient for:	Single treatment sufficient for:
JBL Ektol® fluid Plus 125	125 l	250 l
JBL Ektol® fluid Plus 250	250 l	500 l

Read the instruction leaflet which is attached to the package carefully before the treatment.

Fungal infections

Usage instructions: JBL Ektol® bac Plus is added to the aquarium water.

Remove any active carbon from the filter prior to and during use. Switch off any UV-C appliances and CO₂-fertilisation. Additionally in saltwater switch off any skimmers and ozonisers. 50 % of the water needs to be changed prior to application. Use an air pump with diffuser to aerate the tank during the treatment. JBL Ektol® bac Plus is best used in the morning and the animals observed throughout its application.



JBL Ektol® bac Plus 250:
2 x 100 ml solution as an additive for 500 l of tank water for ornamental fish in fresh water
100 ml (C1) contain:
benzalkonium chloride 750 mg
methylthionium chloride 600 mg
100 ml (C2) contain:
povidone iodine 8000 mg

Name of remedy	Treatment cycle sufficient for:	Single treatment sufficient for:
JBL Ektol® bac Plus 250	250 l	500 l

Read the instruction leaflet which is attached to the package carefully before the treatment.

Fungal infections

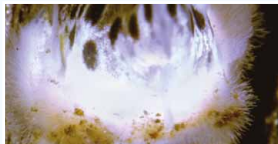
JBL Fungol® Plus 250 is effective against:

Fungal infections
Saprolegnia
cotton ball-like fur
fungal infection on spawn

Suitable for:



Fungal infections



Fungal infections



Fungal infections



Fungal infections

Fungal infestations often occur as secondary infections, caused by a skin injury. They can equally often appear as primary infestations. In those cases a treatment against both is necessary.

Danger of confusion

Mouth rot

(see tab bacterial infection)



Mouth fungus is not a fungal infection but a bacterial disease

Usage instructions: JBL Fungol® Plus 250 is added to the aquarium water.

Remove any active carbon from the filter prior to and during use. Switch off any UV-C appliances and CO₂-fertilisation. Additionally in saltwater switch off any skimmers and ozonisers. 50 % of the water needs to be changed prior to application. Use an air pump with diffuser to aerate the tank during the treatment. JBL Fungol® Plus 250 is best used in the morning and the animals observed throughout its application.

Note: Never use JBL Fungol® Plus 250 together with JBL Punktol Plus. They are mutually incompatible.

Name of remedy	Treatment cycle sufficient for:	Single treatment sufficient for:
JBL Fungol® Plus 250	250 l	750 l

Read the instruction leaflet which is attached to the package carefully before the treatment.



JBL Fungol® Plus 250:
 2 x 100 ml solution as an additive for
 750 l of tank water
 for ornamental fish in fresh water
 100 ml (C1) contain:
 malachite green oxalate 37.5 mg
 ethacridine lactate 1500 mg
 100 ml (C2) contain:
 povidone iodine 3750 mg

Skin and
gill flukes

Skin and
gill flukes**JBL Gyrodol® Plus 250**

is effective against:

Trematodes
Skin flukes (gyrodactylus)
Gill flukes (dactylogurus)
Tapeworms (cestoda)
Flatworms (planaria)

Suitable for:



Gill fluke infestation



Gill fluke infestation



Tip: An infestation of the gills on bigger fish can easily be noticed: catch the suspected fish, put it on a damp surface and lift a gill cover carefully with tweezers. The whitish worms can easily be recognized with a magnifying glass (10 x).

Usage instructions: JBL Gyrodol® Plus 250 is added to the aquarium water.

Remove any active carbon from the filter prior to and during use. Switch off any UV-C appliances and CO₂-fertilisation. Additionally in saltwater switch off any skimmers and ozonisers. 50 % of the water needs to be changed prior to application. Use an air pump with diffuser to aerate the tank during the treatment.

JBL Gyrodol® Plus 250 is best used in the morning and the animals observed throughout its application.

Name of remedy	Treatment cycle sufficient for:	Single treatment sufficient for:
JBL Gyrodol® Plus 250	250 l	500 l

Read the instruction leaflet which is attached to the package carefully before the treatment.



JBL Gyrodol® Plus 250:
100 ml suspension as additive for
500 l of tank water
for ornamental fish in fresh water
and salt water.
100 ml contain:
Praziquantel 1500 mg

Carp louse and
anchor worm

JBL Aradol® Plus 250

is effective against:

Carp louse (argulus)
Anchor worm (lernaea)
Gill maggot (ergasilus)

Suitable for:



Carp louse and
anchor worm



Anchor worms



Carp lice



Gill maggot

Usage instructions: JBL Aradol® Plus 250 is added to the aquarium water.

Remove any active carbon from the filter prior to and during use. Switch off any UV-C appliances and CO₂-fertilisation. Additionally in saltwater switch off any skimmers and ozonisers. 50 % of the water needs to be changed prior to application. Use an air pump with diffuser to aerate the tank during the treatment.

JBL Aradol® Plus 250 is best used in the morning and the animals observed throughout its application.

Name of remedy	Treatment cycle sufficient for:	Single treatment sufficient for:
JBL Aradol® Plus 250	250 l	500 l

Read the instruction leaflet which is attached to the package carefully before the treatment.



JBL Aradol® Plus 250:
100 ml suspension as additive for
500 l of tank water
for ornamental fish in fresh water
and salt water.
100 ml contain:
Diflubenzuron 164 mg

Worms

JBL Nedol® Plus 250

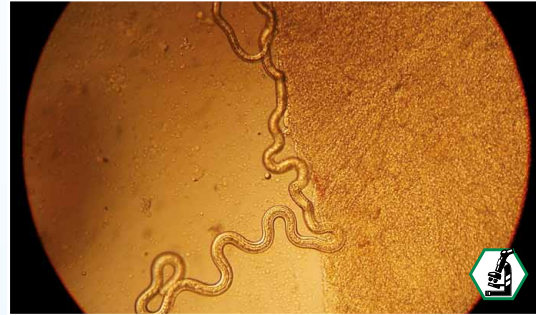
is effective against:

Round worms (nematodes)
Camallanus cotti (camallanidae)
 Pinworms (oxyuridae)
 Intestinal round worms (anisakidae)
 Hair worms (capillaridae)

Suitable for:



Worm infestation



Hair worms

Usage instructions: JBL Nedol® Plus 250 is added to the aquarium water.

Remove any active carbon from the filter prior to and during use. Switch off any UV-C appliances and CO₂-fertilisation. Additionally in saltwater switch off any skimmers and ozonisers. 50 % of the water needs to be changed prior to application. Use an air pump with diffuser to aerate the tank during the treatment. JBL Nedol Plus® 250 is best used in the morning and the animals observed throughout its application.

Name of remedy	Treatment cycle sufficient for:	Single treatment sufficient for:
JBL Nedol® Plus 250	250 l	500 l

Read the instruction leaflet which is attached to the package carefully before the treatment.



JBL Nedol® Plus 250:
100 ml suspension as additive for
750 l of tank water
for ornamental fish in fresh water
and salt water.
100 ml contain:
benzimidazole 9375 mg

Hole-in-the-head
disease

JBL Spirohexol® Plus 250

is effective against:

Flagellates
Hole-in-the-head disease
Spironucleus
Hexamita
Protoopalina

In soft water lack of minerals together with a mass reproduction [propagation] of flagellates can lead to the hole-in-the-head disease. Therefore minerals and a remedy should be added.

Suitable for:



Hole-in-the-head disease



Hole-in-the-head disease

Usage instructions: JBL Spirohexol® Plus 250 is added to the aquarium water.

Remove any active carbon from the filter prior to and during use. Switch off any UV-C appliances and CO₂-fertilisation. Additionally in saltwater switch off any skimmers and ozonisers. 50 % of the water needs to be changed prior to application. Use an air pump with diffuser to aerate the tank during the treatment. JBL Spirohexol® Plus 250 is best used in the morning and the animals observed throughout its application.

Name of remedy	Treatment cycle sufficient for:	Single treatment sufficient for:
JBL Spirohexol® Plus 250	250 l	500 l

Read the instruction leaflet which is attached to the package carefully before the treatment.



JBL Spirohexol® Plus 250:
100 ml suspension as an additive for
500 l of tank water for ornamental fish
in fresh water and salt water.
100 ml contain:
5-nitro-1,3-thiazole-2-ylazan 2500 mg



9637710 V01

JBL Klappregister Heilmittel UK

