

JBL



Pond

2015





Dear Pond Enthusiasts,

Just like you, I really enjoy feeding our pond fish! And the food we choose forms an important basis for healthy fish in a beautiful pond. That's why the JBL research department has focused on the scientific foundations of pond fish nutrition, and has passed its wide ranging findings on to our product development. That's how I can use JBL Koi Summer food with peace of mind to give my koi an easily digestible and tasty food, even on very hot days.

Wishing you all future pleasure with your garden pond!

All the best,

Alfred Bötter
General Manager JBL GmbH & Co. KG

Contents

Food	7-11	Technic	19-22
For all species Main food	7	UV-C water clarifier for garden ponds	19-21
For all species Supplementary food	7	Air pumps & accessories	22
Sturgeon food Main food	8	Accessories	23-24
Koi Main food	10	Water test	23
Koi Supplementary food	11	Miscellaneous Thermometer	24
Care products	13-17	Promotion	26-27
Water stabilising	13	Shopsystem	28
Algaecide	14		
Limiting nutrients	15		
Plant care	15		
Fish care Medication	17		
Fish care Water treatment	17		

NEW New Products 2015

Food

NEW **JBL Koi Summer**
Summer premium food for large koi 11

NEW **JBL Display Koi Summer 10 I (28x)**
Summer food for koi in an attractive display 11

Care products

NEW **JBL BiotoPond®**
Treats pond water quickly and adequately for fish 17

Technic

NEW **JBL Fine Filter Foam**
Foam block 50 x 50 x 2,5/5/10 cm 22

NEW **JBL Coarse Filter Foam**
Foam block 50 x 50 x 2,5/5/10 cm 22



For this product you'll find
a video on the JBL web site
and on YouTube.



The JBL success story

From a 30 m² pet shop to a worldwide pond- and aquarium product specialist

It all began in Ludwigshafen in 1960 with a small pet shop, just 30 m² in size, which Joachim Böhme, a trained chemist from Dresden, opened and so made his hobby his job. His love of animals, his white lab coat as his working clothes, and his friendly manner as well as his specialist knowledge all contributed to his success.

His business grew and the pet shop evolved into a wholesale ornamental fish business. As fish diseases became a problem, Joachim Böhme put his studies to good use and developed a highly effective remedy against ectoparasites, which he named Punktol.

Up to the present day, JBL, under the leadership of Roland Böhme, the son of the founder, has expanded its range to over 1000 products for the aquarium, terrarium and garden pond and has established a position as a leading producer in this field, exporting to 65 countries around the world.

Using the latest production and filling plant, all JBL products are manufactured and dispatched in Neuhofen. The company site covers over 12,000 m² and includes not only the Production plant and the 6,500 m² Logistics Center completed in 2008, but also the Research Center. Here many fully stocked aquariums and terrariums operate on a permanent basis in order to test all the products under realistic conditions. In order to take the in-house tests to an even more stringent level, JBL cooperates with leading scientific institutions throughout Europe, such as the Leibnitz Institute for Marine Science in Kiel (IFM Geomar), the Department of Measurement and Laser Technology at the University of Ulm and the Haus des Meeres in Vienna.

In addition to the usual experiments and tests in the laboratory, JBL biologists have for many years now gained their insight into the habitats and life of the animals directly from nature in the course of JBL research expeditions and workshops. The protection of wildlife and environmental awareness are key factors for JBL. By means of a photovoltaic system installed on the roofs of the company buildings, JBL is able to generate sufficient electricity itself to meet the entire requirements of production. For many years JBL has been a supporter of the SHARK PROJECT, the largest international protection organization for sharks, as sharks are threatened with imminent extinction at the hands of man.



Garden Pond enthusiasts know that they can depend on the quality of JBL products and appreciate the new innovations which JBL regularly launches on the market.

Dr. Rainer Keppler, Director of Development at JBL states, "The best ideas don't originate from us! It's the pond enthusiasts, terrarium fans and sales staff who phone us and tell us their ideas. We then apply our knowhow to convert these often amazing ideas into products at acceptable prices."

Understanding Mother Nature.

Ahead through research.

Garden ponds are different to natural ponds and lakes. These differences only become apparent through intensive research in natural waters and garden ponds. Based on these studies, the JBL research department started to develop products, to prevent the build-up of algae in garden ponds, to combat diseases and to keep the water crystal-clear. Laboratory work alone is not sufficient for garden pond research. It is the natural factors, such as leaves, rain and thunderstorms that show up the problem areas, which require further work.

JBL's research team has done a good job so far. With the current JBL product range, long-term care of pond fish, in crystal-clear ponds, is possible without any difficulties.



Feed your fish to health!

What's special about JBL's Pond Fish Food?

At first glance, pond fish and koi aren't that different from aquarium fish. Nevertheless their nutritional requirements do differ and strongly depend on their size and on the water temperature. The colder the water in the pond, the slower the metabolism of the fish is, with the result that both their digestion and their energy requirement become lower. Yet even in cold winters it never comes to a complete standstill, otherwise the fish would not survive. But in the warm season the metabolism accelerates and the energy requirement increases significantly. This interplay must be taken into account, e.g. by means of special food for the different seasons or additional aeration during the hot summer days. JBL has taken this into consideration and has developed a highly digestible pond fish food (JBL Pond Energil and JBL Koi Energil) for the cold season.

It is vitally important that the pond fish are fed as long as possible in the autumn and again very early in spring. This will leave the fish with enough energy reserves to survive the coldest season, whilst being fit and healthy. Adequate feeding in the autumn can prevent diseases, which can weaken the immune system the following spring! For the hot summer weeks, which are as exhausting for the pond fish as for us humans, JBL provides JBL Koi Summer specially formulated for koi.

The JBL research team has pooled all available scientific knowledge on the nutrition of the most common pond fish, such as Koi, goldfish and ornamental sturgeons and has drawn upon it to select the quality ingredients of the JBL food formulas. The JBL pond foods have been tested on fish at JBL's own ponds and also by external specialists. This practical research benefits your pond fish!





Packaging that is light-proof and resealable with well-conceived detailed solutions complements the high quality of the JBL products.

Food > For all species > Main food

	JBL PondSticks classic Classic food sticks for pond fish <ul style="list-style-type: none">Floating food sticks for garden pond fish during the warmer time of yearValuable plant fibres with vitamin complexes ensure a healthy digestive system and provide resistance to disease.High plant concentrations correspond to the natural diet of many pond fish and make the food easier to digest, thereby reducing water pollution.	Art. no.	Content	Weight	UP	
		41001	1 l	100 g	6	
		41002	5,5 l	550 g	1	
		41004	31,5 l	3200 g	1	
	JBL PondSticks 4in1 4 different sticks in one food <ul style="list-style-type: none">The perfect all-round food for all pond fish longer than 15 cm. Red sticks: with carotenoids and shrimp for brilliant fish colours. Yellow sticks: wheat germ for vitality and growth.Green sticks: healthy vegetable diet.Black sticks: beta-glucane activates resistance to disease.10 l size: practical refill bag with air-tight slider seal.	Art. no.	Content	Weight	UP	
		40145	1 l	160 g	6	
		40146	5,5 l	890 g	1	
		40153	10,0 l	1600 g	6	
		40147	10,5 l	1680 g	1	
		40148	31,5 l	5000 g	1	
	JBL PondFlakes Flake food for pond fish <ul style="list-style-type: none">Main food for all pond fish.Floating food flakes.For moderate and warm temperatures.Also suitable for smaller fish.	Art. no.	Content	Weight	UP	
		40195	1 l	130 g	6	
		40197	5,5 l	770 g	1	
		40199	10,5 l	1470 g	1	
	JBL PondColoron Colour food sticks for all pond fish <ul style="list-style-type: none">Main food sticks for all pond fish.Natural carotinoids and xanthenes enhance brilliant colouring.Valuable vegetable and animal raw materials add variety to the diet of fastidious pond fish.Balanced vitamin C and multivitamin complexes increase resistance to disease.	Art. no.	Content	Weight	UP	
		40190	1 l	440 g	6	
		41024	5,5 l	2400 g	1	
	JBL PondVario Balanced mixture of flake food, sticks and crustacea <ul style="list-style-type: none">Main food mix for all pond fish.Maximum acceptance due to crustaceans.Mixture of smaller and larger-sized ingredients make this food suited for all sizes of fish.20% crustaceans provide balanced protein/ballast content meeting nutritional needs.Essential vitamins increase resistance to diseases.	Art. no.	Content	Weight	UP	
		40290	1 l	130 g	6	
		40296	5,5 l	690 g	1	
		40298	10,5 l	1370 g	1	

Food > For all species > Supplementary food

	JBL PondEnergil Food sticks for lower temperatures <ul style="list-style-type: none">Energy-rich, easily digestible food for temperatures below 15°C.Fish oil covers the high need for unsaturated fatty acids.Reduced protein content as the fish do not grow in winter and need less protein.	Art. no.	Content	Weight	UP	
		41027	1 l	600 g	6	
		41028	5,5 l	3300 g	1	





JBL PondSterlet
Sinking food pearls for sturgeon

- With high quality protein from aquatic animals.
- Specially designed to meet the nutritional needs of sturgeon.
- Stable in water, therefore accessible to the sloweating sturgeon over a long period in water without polluting the water.

Art. no.	Content	Weight	UP
40200	1 l	600 g	6
41035	5,5 l	3300 g	1



JBL PondSterlet XL
Sinking food pearls (6 mm) for large sturgeons

- High-grade proteins from aquatic animals and spirulina.
- Stable in water, resulting in long availability for slow-feeding sturgeons without polluting the water.
- Protein content formulated to meet the needs of larger (> 60 cm), slower growing sturgeons.
- Optimum protein-fat ratio of 4:1 ensures healthy growth with minimal water pollution and less algae as a result. Dermatologically tested for skin compatibility.

Art. no.	Content	Weight	UP
40309	5,5 l	3300 g	1



The JBL koi food concept

Koi have varying nutritional needs depending on their age. Young, fast-growing koi require a higher protein content than koi that are older and grow more slowly as a result. Aside from composition, the grain size is also important for species-appropriate intake of food.

That is why the packaging always indicates the size of the koi that the food is intended for.











Analytical composition:	
Protein	42 %
Fat content	10.5 %
Raw fibre	2 %
Crude ash	10 %

Analytical composition:	
Protein	38 %
Fat content	9.5 %
Raw fibre	2 %
Crude ash	10 %

Analytical composition:	
Protein	33 %
Fat content	8 %
Raw fibre	3 %
Crude ash	10 %

	JBL Koi mini Koi pellets for young koi (10 - 20 cm) <ul style="list-style-type: none">The novel pearl shape ideally suits the size of mouth of young koi.The ingredients satisfy the needs of young koi, due to essential substances, energy carriers and vitamins.High vitamin content helps to develop the immune system.Well-balanced percentage of constituents of animal and vegetable origins.With adjusted protein to fat ratio of 4:1	Art. no.	Content	Weight	UP	
	41011 41012		1 l 5,5 l	420 g 2300 g	6 1	
	JBL Koi midi Koi pellets for medium-sized koi (15 - 35 cm) <ul style="list-style-type: none">Presentation and nutrient content tailored to the specific needs of medium-sized fast-growing Koi.Select protein carriers and appropriate fat content to ensure a balanced growth rate.15 % wheat germ content, fish protein and 4 % fish oil, as well as spirulina algae, satisfy the nutritional needs of the fish.With adjusted protein to fat ratio of 4:1	Art. no.	Content	Weight	UP	
	41016 41017		1 l 5,5 l	400 g 2200 g	6 1	
	JBL Koi maxi Koi pellets for large Koi (over 30 cm) <ul style="list-style-type: none">High-grade food pearls with 10 % high-protein spirulina algae.Unsaturated fatty acids and carotenoids yield well-balanced growth and brilliant colours.Essential vitamins and stabilized vitamin C enhance the resistance to diseases.With adjusted protein to fat ratio of 4:1.	Art. no.	Content	Weight	UP	
	41020 41022		5,5 l 10,5 l	2140 g 4100 g	1 1	



 NEW	JBL Koi Summer Summer premium food for large koi <ul style="list-style-type: none">Easy to digest premium special food for the warm season (from 20 °C water temperature).Bite-sized, floating granules for Koi of 30 cm upwards.Contains 5% high-quality spirulina algae and 5% gammarus shrimp. Available in resealable, opaque freshlock bags.Optimal protein/ fat ratio for perfect health.High concentration of vitamins and amino acids which promote better health.	Art. no.	Content		UP	
	40188		10 l		6	
 NEW	JBL Display Koi Summer 10 l (28x) Summer food for koi in an attractive display <ul style="list-style-type: none">Easy to digest premium food designed for the warm season (from 20 °C water temperature).Bite-sized, floating granules for Koi of 30 cm upwards.Available in resealable, opaque freshlock bags.Optimal protein/fat ratio for perfect health.28 x 10 litre freshlock bag JBL Koi Summer.Floor space: 80 x 60 cm, height approx. 170 cm including header.	Art. no.	28 x 10 l		UP	
	40189				1	
	JBL Koi Energil midi Vital winter food for small to medium-sized koi <ul style="list-style-type: none">Premium food for small to medium-sized koi of 10 to 35 cm at temperatures below 15°C.Sinking sticks, because koi withdraw into deeper water when temperatures drop.Vital for the prevention of diseases prevalent in spring.Stick sizes: 3-4 mm.	Art. no.	Content	Weight	UP	
	40306		1 l	600 g	6	
	JBL Koi Energil maxi Essential winter food for large koi <ul style="list-style-type: none">Premium food for large koi of 30 cm upwards at temperatures below 15 °C.Sinking sticks, because koi withdraw into deeper water when temperatures drop.Stick sizes: 5-6 mm.Vital for the prevention of diseases prevalent in spring.	Art. no.	Content	Weight	UP	
	41007		5,5 l	3300 g	1	



The Zero-Risk Concept

1-2-3 algae free



Of course, every pond owner would prefer to be able to solve all algae problems for the rest of the year by simply adding an anti-algae agent to the pond water. At the same time, though, practically every pond enthusiast has found out by experience that this does not work.

JBL has developed a 3-step, scientifically tested concept that permits ponds to also function without algae problems permanently.

The right sequence and completion of all 3 steps are needed for permanent success in solving algae problems in ponds. If, contrary to expectations, the application was not successful, you can consult the JBL online pond lab (www.jbl.de/pondlab), which inquires systematically as to the problems and the measures taken. The diverse tests that JBL has subjected this concept to were all so successful that they have decided to offer a money-back guarantee!

Care products > Water stabilising

	JBL StabiloPond basis Basic care product for all garden ponds	Art. no.	Content	Range	UP	
	<ul style="list-style-type: none"> The absolutely vital basis for successful pond care without algae problems. Creates a natural biotope-like climate in the pond, with stable KH, GH and pH levels suitable for the species. Is the life insurance for fish and other pond life. Adds vital materials to the pond. Simply scatter in 100 g granulate per 1000 l pond water. 	27310	0,25 kg	2500 l	6	
		27311	1 kg	10000 l	1	
		27312	2,5 kg	25000 l	1	
		27313	5 kg	50000 l	1	
		27314	10 kg	100000 l	1	
	JBL StabiloPond KH pH-balancer for garden ponds	Art. no.	Content	Range	UP	
	<ul style="list-style-type: none"> balances the pH level (acid content) to optimum 7.5 – 8.5 by increasing carbonate hardness (KH). Prevents fish losses from algae bloom. Absorbs heavy metals and promotes the breakdown of toxic ammonia. 	27317	0,25 kg	2500 l	6	
		27318	1 kg	10000 l	1	
		27319	2,5 kg	25000 l	1	
		27320	5 kg	50000 l	1	
		27321	10 kg	100000 l	1	
	JBL OxyPond Highly active oxygen for garden ponds	Art. no.	Content	Range	UP	
	<ul style="list-style-type: none"> Active oxygen for a steady supply of oxygen, particularly important for procedures consuming a lot of oxygen such as fighting algae or reducing mud levels. Fast and effective increase in oxygen levels. Effective against pond "turnover". Easy to use: simply scatter the granules onto the pond. Particularly vital in high summer temperatures. 	27335	0,25 kg	5000 l	6	
		27336	1 kg	20000 l	1	
		27337	2,5 kg	50000 l	1	
	JBL FilterStart Pond Filter bacteria to activate pond filters	Art. no.	Content	Range	UP	
	<ul style="list-style-type: none"> Shortens biological running-in time to just a few days. Immediately absorbs ammonium-ammonia and nitrite. Bacteria cultured on special host substance to simply scatter in filter. Purely biological product – no chemicals. 	27325	0,25 kg	10000 l	6	





JBL AlgoPond Sorb
Algae blocker by physical means: Reduces algae growth using "sunglasses effect"

- Acts as a light filter, thereby depriving the algae of part of their essential light radiation.
- A light yellowish discolouration of the water is an indication of effective treatment.
- Does not reduce pH or hardness levels.

Art. no.	Content	Range	UP
27362	0,5 l	10000 l	3
27363	2,5 l	50000 l	1



JBL AlgoPond Forte
General algaecide (against all kinds of algae)

- Removes excess algae growth.
- Reliably prevents all kinds of algae (even mixed species).
- Free of copper.

Art. no.	Content	Range	UP
27405	0,25 l	5000 l	6
27406	0,5 l	10000 l	3
27407	2,5 l	50000 l	1
27408	5 l	100000 l	1

Use biocides safely.
Always read the labelling and product information before use.



JBL AlgoPond Direct
Reliably eliminates blanket weed

- Quickly eliminates thread algae using active oxygen.
- Problem-free application: simply scatter over the algae bed.
- The oxygen attacks the algae cells and destroys them.
- Effect is immediate, algae perish within hours.
- 30 – 50 g JBL AlgoPond Direct per 1000 l pond water.
- 30 g dosage for 800 l, 50 g dosage for 1000 l.

Art. no.	Content	Range	UP
27355	0,25 kg	8000 l	6
27356	1 kg	30000 l	1
27357	2,5 kg	80000 l	1

Use biocides safely.
Always read the labelling and product information before use.



JBL AlgoPond Green
Eliminates Green Water problems (floating algae)

- Green water in a pond is caused by floating algae, which are killed off by JBL AlgoPond Green.
- The dead algae are decomposed by bacteria in the pond.
- There are no detrimental effects on the biological balance of the pond.
- The water should be checked with JBL PondCheck prior to application to make sure the KH is at least 4 ° dKH.

Art. no.	Content	Range	UP
26064	0,25 l	5000 l	6
26065	0,5 l	10000 l	3
26066	2,5 l	50000 l	1
26067	5 l	100000 l	1

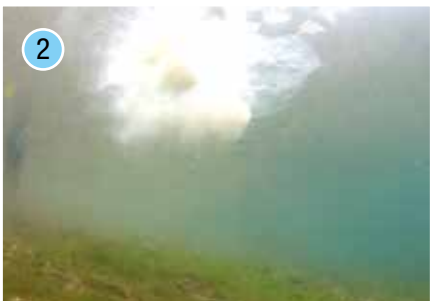
Use biocides safely.
Always read the labelling and product information before use.



How JBL AlgoPond Direct* works

- 1-3. The interspersed powder sinks to the bottom or onto the algae deposits.
- 4-5. The effect already sets in a few minutes later and causes the algae to break loose from the bottom
6. The algae float to the top and can be collected e.g. with a dip net.

*Use biocides safely.
Always read the labelling and product information before use.



JBL PhosEX Pond Filter
Phosphate-eliminating granulate, prevents algae

- Eliminates the basic nutrients of all types of algae, preventing the growth of unwanted algae.
- Significant reduction of high phosphate levels after only 24 hours.
- Effective for about 3 months.
- For all pond filters with filter material container.
- Includes net bag for individual dosage.
- Does not release aluminium or other undesired substances.

Art. no.	Content	Range	UP
27373	0,5 kg	5000 l	1
27374	1 kg	10000 l	1
27375	2,5 kg	25000 l	1



JBL PhosEX Pond Direct
Eliminates phosphates.

- Reliably adsorbs the nutrient phosphate which has been dissolved in the water. A brownish water discoloration indicates its effectiveness.

Art. no.	Content	Range	UP
27393	0,25 l	3000 l	6
27394	0,5 l	10000 l	3
27395	2,5 l	50000 l	1
27396	5 l	100000 l	1



JBL SediEX Pond
Breaks down mud effectively and biologically

- Granular food with live bacteria to scatter onto the pond to mineralise pond sludge.
- Note: 2-component system comprised of bacteria and active oxygen.
- Creates healthy pond water and prevents rotting processes on the floor of the pond.
- Helps avoid fish losses.
- Reduces algae growth by absorbing excess nutrients.

Art. no.	Content	Range	UP
27330	0,25 kg	2500 l	6
27331	1 kg	10000 l	1
27332	2,5 kg	25000 l	1



JBL BactoPond
Biological pond cleaner

- Creates healthy, clean pond water by biological breakdown of pollutants.
- Live pond bacteria absorb proteins, ammonium/ammonia and nitrite.
- Helps avoid fish loss.
- Reduces algae growth by absorbing excess nutrients.
- Liquid product: 40 ml / 700 – 800 l pond water.

Art. no.	Content	Range	UP
27326	0,25 l	5000 l	6
27327	0,5 l	10000 l	3
27328	2,5 l	50000 l	1



JBL CleroPond
Water clarifier

- Removes all types of clouding quickly and reliably.
- The flocculation causes cloudiness to disappear to where the flocculated particles can then be removed by the filter.

Art. no.	Content	Range	UP
27350	0,5 l	10000 l	3
27351	2,5 l	50000 l	1



JBL FloraPond
Fertiliser balls for pond plants

- Fresh growing power for all lilies and marsh plants in the garden pond.
- Special clay pellets loaded with the main nutrients and trace elements.
- For a sustainable long-term supply in a planted pond.
- Provides sufficient nutrients for approx. one year.
- Promotes the growth of plants, not algae.

Art. no.	Content	Diameter	UP
27380	8 Pieces	30 mm	6



What kind of problem does your pond fish exhibit?

If the water parameters are fine and the fish are being fed appropriately for their species, there shouldn't be any trouble with fish diseases. However, if disease symptoms do happen to appear, this overview should help you with the diagnosis. Once the correct diagnosis has been found, JBL's medications will provide fast and reliable relief!

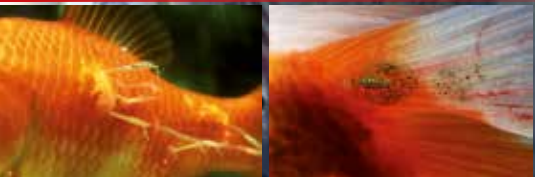
- White little dots, more ciliates, skin turbidity ...
- Fungal infestation of the skin and fins
- Fins rot off
- Carp lice, anchor worms
- Ulcers, open wounds on the body
- Skin and gill flukes



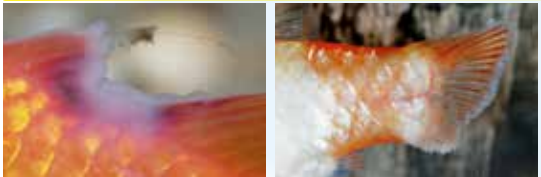
White little dots, more ciliates, skin turbidity ...



Carp lice, anchor worms



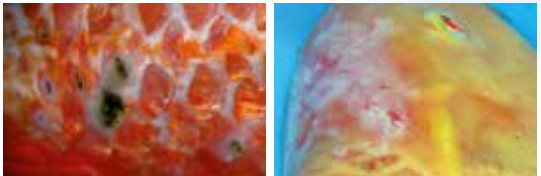
Fins rot off



Skin and gill flukes



Ulcers, open wounds on the body



Fungal infestation of the skin and fins



JBL Online-Hospital

Your reliable assistant for diagnosing and treating pond fish diseases. More than 500 photos help you identify fish diseases and obtain advice for treatment. You can use the photos to diagnose directly, enter a search term or click through an identification key.



The free advice site for diagnosis and therapy at www.JBL.de

Care products > Fish care > medication



JBL ArguPond Plus®

- Against carp lice & anchor worms**
- Treatment against parasitising crustaceans like carp lice (Argulus), anchor worms (Lernaea) and gill lice (Ergasilus).
 - Do not use below 18 °C.
 - Dosage: 40 ml for 800 l pond water.
 - A one-time dose tends to be sufficient for treatment.
 - Cannot be tolerated by invertebrates (insect larvae) and crayfish.

Art. no.	Content	Range	UP
27132	0,5 l	10000 l	3
27134	5 l	100000 l	1

*For questions on risks and side-effects please read the package insert and ask your veterinary or pharmacist.



JBL GyroPond Plus®

- Against skin and gill flukes and tapeworms**
- Highly effective remedy for gill flukes (Dactylogyrus), skin flukes (Gyrodactylus) and tapeworms (Cestodae) in pond fish.
 - Catfish and sheatfish can react sensitively.
 - Dosage: 40 ml for 800 l of pond water with tapeworms, 40 ml for 400 l pondwater with skin- and gill flukes.
 - Oviparous gill flukes require double treatment.

Art. no.	Content	Range	UP
27136	0,5 l	10000 l	3

*For questions on risks and side-effects please read the package insert and ask your veterinary or pharmacist.



JBL FuraPond®

Medication against internal and external bacterial infections

- Fast and effective treatment in the initial stage of ulcers, fin rot, "popeye" dropsy occurring in spring. Effective against bacteria of the strains, Aeromonas, Pseudomonas, Columnaris, Flexibacter, Streptococci and others. Very well tolerated, also by crayfish. It is absorbed quickly through the gills and can be traced in all organs after only a few minutes. The effective ingredient, sodium nifurstyrenate, acts faster and more effectively than antibiotics.

Art. no.	Content	Range	UP
27180	24 Tabl.	4200 l	3

In Germany, drugs with the active ingredient, sodium nifurstyrenate, are prescription drugs and may not be advertised by pictures.



JBL Ektol bac Pond Plus®

Medication against bacterial infections

- Quickly and reliably treats ulcers, fin rot, popeye and early stage dropsy which often occur in spring.
- Effectively treats bacteria of the strains Aeromonas, Pseudomonas, Columnaris, Flexibacter and others.
- Dosage: 40 ml for 800 l of pond water.

Art. no.	Content	Range	UP
27141	0,5 l	10000 l	3
27142	2,5 l	50000 l	1
27143	5 l	100000 l	1

*For questions on risks and side-effects please read the package insert and ask your veterinary or pharmacist.



JBL BiotoPond®

Treats pond water quickly and adequately for fish

- Protects gills, skin and fins through organic protective colloids and nourishes with aloe vera.
- Poisonous heavy metals such as copper, lead, zinc and others will be neutralized permanently.
- Dangerous chlorine and chloramine from tap water are eliminated quickly and completely.
- JBL BiotoPond® makes iron plant available and supports plant growth.

Art. no.	Content	Range	UP
26060	0,25 l	5000 l	6
26061	0,5 l	10000 l	3
26062	2,5 l	50000 l	1
26063	5 l	100000 l	1



JBL AccliPond®

Activates resistance

- Facilitates readiness to spawn and the health of fish.
- For use following the implementation of medication: JBL AccliPond® activates immunity and increases the vitality of pond fish by adding valuable plant extracts and vitamins.
- JBL AccliPond® ensures a stress-free transport of fish and supports the introduction of fish into the pond.
- With iodine and folic acid.

Art. no.	Content	Range	UP
26070	0,5 l	10000 l	3
26071	5 l	100000 l	1



Care products > Fish care > Water conditioning

NEW

Pond

Pond

Using JBL technology for crystal-clear water!



Green water in the pond (caused by suspended algae) can be annoying, although this algae species can quickly and safely be eradicated with the JBL “1-2-3-algae-free” concept. Using the JBL AquaCristal UVC water clarifier gives you an unobtrusive and permanent technical alternative for getting to grips with green water, both as it arises and after it has settled.

Not everybody likes water tests, but they are the only effective means of analysing pond water. With the JBL water tests, everyone – from the beginner, to the expert, right up to the scientist – can quickly and thoroughly test a pond. And remember, even clear water can contain harmful substances, which only a water test can detect prior to removal.

Technic > UV-C



JBL AquaCristal UV-C Series II

Water clarifier for garden ponds

- Bacteria destroying UV-C radiation of about 255 nm reliability and quick removes green (floating algae) and white (bacterial) cloudiness.
- No harmful side-effects.
- Reduces amount of germs and decreases risk of infection.
- Inlet and outlet on the same side, saving the space when installing. Channeling in casing ensures optimum water flow
- Safety factor: UV-C burner automatically switches off when unit is opened.
- Cable Length: 2m cable to ballast control. 5m from ballast control to UV-C unit.



JBL AquaCristal UV-C 5 W

Water clarifier for garden ponds

recommended pump performance	Pond			
	Cloudiness		Partial degermination	
	l	l/h	l	l/h
	3000 till 5000	500 till 1000	300 till 500	100 till 200

Art. no.	Performance	Length	UP
60350	5 W	21 cm	1



JBL AquaCristal UV-C 9 W

Water clarifier for garden ponds

recommended pump performance	Pond			
	Cloudiness		Partial degermination	
	l	l/h	l	l/h
	5000 till 9000	500 till 1000	500 till 800	100 till 200

Art. no.	Performance	Length	UP
60351	9 W	30,5 cm	1



JBL AquaCristal UV-C 11 W

Water clarifier for garden ponds

recommended pump performance	Pond			
	Cloudiness		Partial degermination	
	l	l/h	l	l/h
	8000 till 11000	1000 till 1500	8000 till 1000	200 till 300

Art. no.	Performance	Length	UP
60352	11 W	36,5 cm	1



JBL AquaCristal UV-C 18 W

Water clarifier for garden ponds

recommended pump performance	Pond			
	Cloudiness		Partial degermination	
	l	l/h	l	l/h
	12000 till 18000	1500 till 3000	1000 till 1800	300 till 500

Art. no.	Performance	Length	UP
60353	18 W	50 cm	1



JBL AquaCristal UV-C 36 W

Water clarifier for garden ponds

recommended pump performance	Pond			
	Cloudiness		Partial degermination	
	l	l/h	l	l/h
	25000 till 35000	2000 till 4000	2000 till 3500	500 till 1000

Art. no.	Performance	Length	UP
60354	36 W	50 cm	1

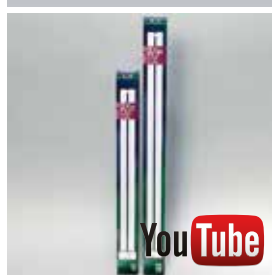




JBL Replacement lamp UV-C

High quality replacement lamp for JBL AquaCristal UV-C and other UV-C devices.

- 18, 24, 36 und 55 Watt models equipped with 2G11 connector.
- 5, 9 and 11 watt models equipped with G23 connector.
- Also compatible with all former JBL UV-C devices.
- Never touch UV-C lamps with bare hands as this reduces the service life of the lamp.

Art. no.	Performance	UP
60305	5 W	1
60306	9 W	1
60307	11 W	1
60308	18 W	1
60361	24 W	1
60309	36 W	1
60362	55 W	1





JBL AquaCristal UV-C 72 W
UV-C water clarifier for garden ponds

Pond			
Cloudiness		Partial degermination	
I	I/h	I	I/h
50000	4000	4000	1000
till 70000	8000	till 7000	2000

JBL AquaCristal UV-C 110 W
UV-C water clarifier for garden ponds



Pond			
Cloudiness		Partial degermination	
I	I/h	I	I/h
70000	6000	6000	1500
till 100000	10000	till 11000	3000

Art. no.
60370

Perfor-
mance
72 W

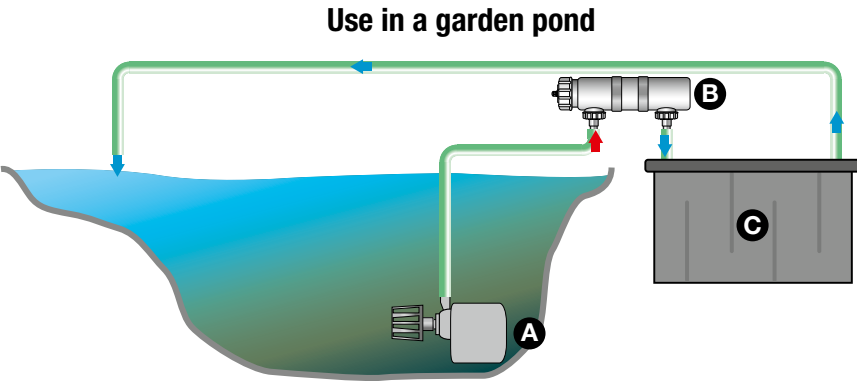
Length
58 cm

UP
1

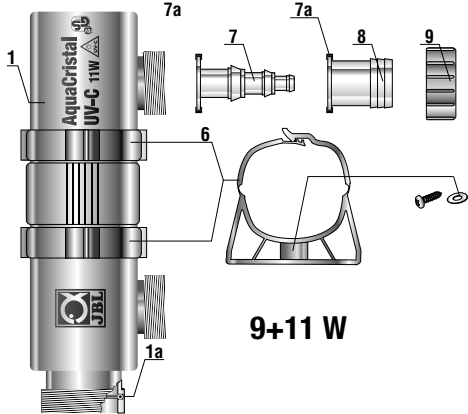


JBL AquaCristal UV-C
Crystal-clear and healthy water in the
aquarium and pond with the UV-C water
clarifier JBL AquaCristal UV-C

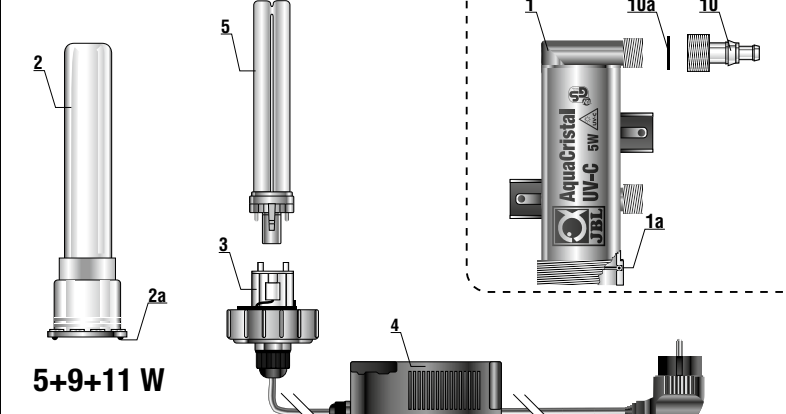
A - pump
B - JBL AquaCristal UV-C
C - filter



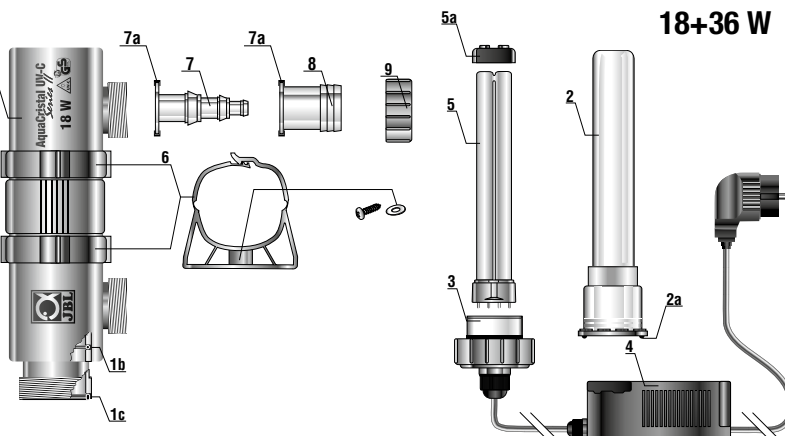
Spare Parts 5 W - 36 W



9+11 W



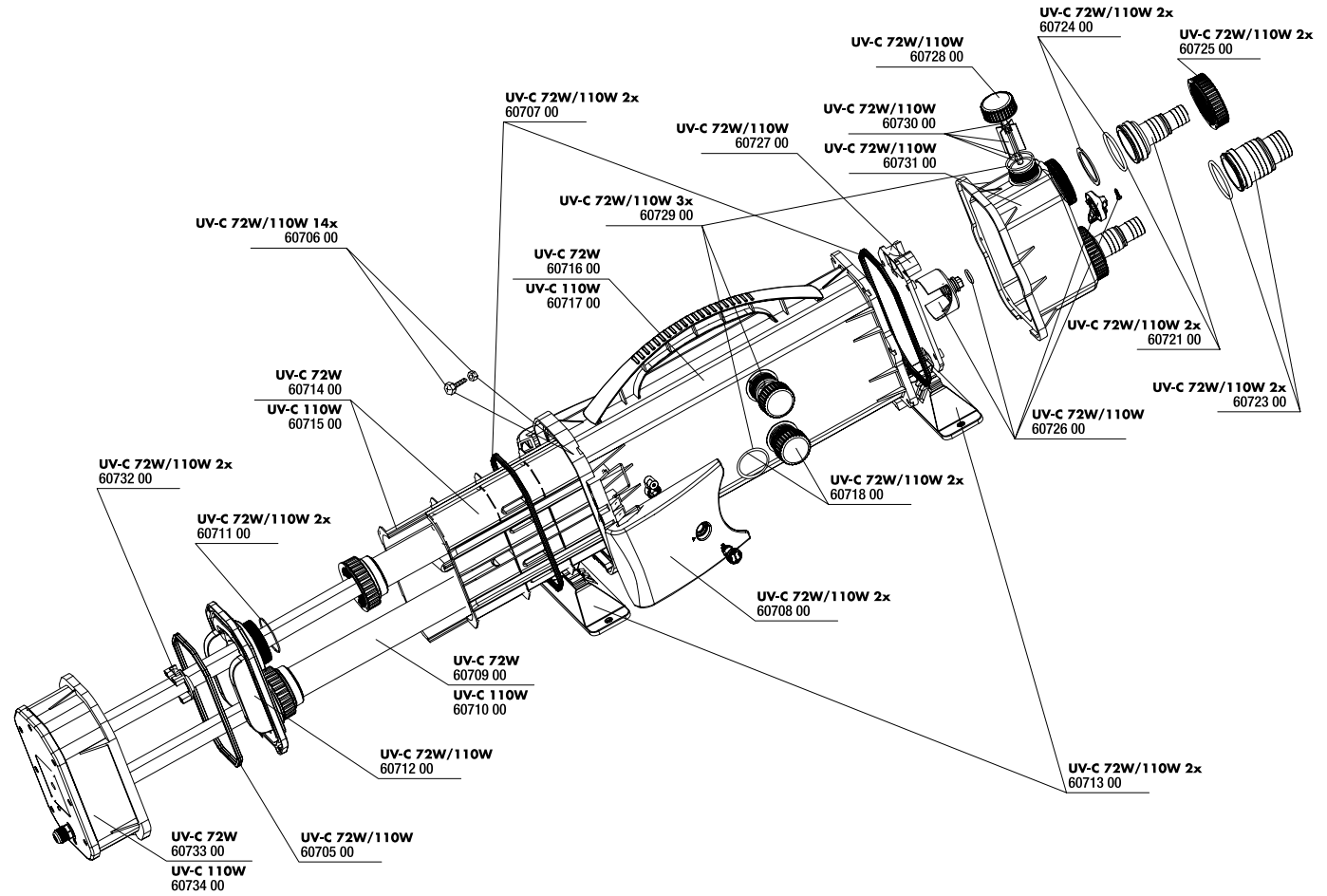
5+9+11 W



18+36 W

		Art. No.				
Pos		5 W	9 W	11 W	18 W	36 W
1+2		60355 00	60356 00	60357 00	60358 00	60359 00
1 A		60327 00				
1 B		---			60335 00	
1 C		---			60336 00	
2 A		60328 00				
3		60315 00	60316 00	60317 00	60318 00	60319 00
4		60305 00	60306 00	60307 00	60308 00	60309 00
5 A		---			60332 00	
6		60326 00				
7		---				
7 A		Set				
8		60330 00				
9		---				
10		60329 00	---			
10A		60333 00	---			

Spare Parts 72 W - 110 W





JBL PondOxi-Set

- Aerating set for garden ponds**
- Consists of: new powerful membrane air pump (200 l/h), 10 m air tube and new conical long lasting aerator stone.
 - With floater at the tube for professional positioning 30 cm underneath the water surface.
 - Prevents lack of oxygen in hot and cold weather.
 - In conjunction with an Ice Free, prevents pond freezing over.

Art. no.	Performance	Watt	UP
28013	200 l/h	3 W	1



JBL Silicon tubing

- On reel, transparent, 4/6 mm**
- Extremely long life.
 - 4/6 mm (internal/external) diameter.
 - Not suited for CO₂.
 - Silicone-like material.
 - Contains no heavy metals.

Art. no.	Diameter	Length	UP
61119	4/6	100 m	100



JBL Aeras Micro Ball L

- Ball shaped airstone**
- From extra-fine quartz sand mixture for particularly fine air bubbles (hence the name „Micro“) Ball air stone with 40mm diameter.
 - Especially suitable as air stone for garden ponds (see JBL Pond Oxi-Set and JBL Floater + AntiKink).
 - In the aquarium the weight of the air stone keeps it on ground without extra weighting.

Art. no.	Diameter	UP
61491	40 mm	6



JBL Floater + AntiKink

- Keeps the airstone in garden ponds at the right level**
- An ingenious accessory for every air stone in a garden pond. Without this floater, the air stone will lie on the bottom or at the lowest point in the pond. This causes a mixing of the water layers, which is highly undesirable. Cooler, oxygen-rich water in the summer and warmer water needs to gather at the bottom in the winter.
 - With kink protection for the hose.

Art. no.	For Ø	UP
28016	6 mm	1



JBL Fine Filter Foam

- Foam block 50 x 50 x 2,5/5/10 cm**
- NEW: Now also available in 2.5 and 10 cm thickness!
 - Open-pored foam produced in a special high-pressure process.
 - Neutral filter material for freshwater and saltwater aquariums.
 - Can be cut to any shape required.
 - Fine pored pre-filter material or long-term filter material.
 - 30 PPI (pores per inch)

Art. no.	Height	UP
62562	2,5 cm	1
62561	5 cm	1
62563	10 cm	1



JBL Coarse Filter Foam

- Foam block 50 x 50 x 2,5/5/10 cm**
- NEW: Now also available in 2.5 and 10 cm thickness!
 - Open-pored foam produced in a special high-pressure process.
 - Neutral filter material for freshwater and saltwater.
 - Can be cut to any shape required.
 - Coarse pore size: biological long-term filter material.
 - 10 PPI (pores per inch)

Art. no.	Height	UP
62565	2,5 cm	1
62560	5 cm	1
62566	10 cm	1



JBL Testlab Koi

- Professional test laboratory for koi and garden ponds**
- 11 different tests for comprehensive water analyses.
 - pH 3.0-10; pH 7.4-9.0; KH; GH; ammonium / ammoniac NH₄/NH₃; nitrite NO₂; nitrate NO₃; phosphate PO₄ sensitive; phosphate PO₄ KOI HIGH RANGE; oxygen O₂.
 - Waterproof plastic case with 6 glas cuvettes, syringes, dosage spoons, thermometer, ballpoint pen and paper for taking notes.
 - A compensation system allows for more precise color comparison.

Art. no.	UP
28020	1



JBL PondCheck

- Pond water quick test**
- Very easy to use, requires no prior knowledge – results in just seconds.
 - Contains a pH test set and a KH test set.
 - Suffices for 50 measurements.
 - Necessary before starting the JBL 1-2-3 algae-free concept.
 - The result shows whether the water is stable or whether StabiloPond Basis/KH needs to be added.

Art. no.	Content For	UP
28015	50 Tests	3



JBL Phosphate Test Kit PO₄ for Koi

- Detects the algal nutrient phosphate in ponds**
- For 50 tests.
 - Only 2 reagents for quick and easy handling.
 - Due to the higher feeding needs in koi ponds this test also displays high values of up to 10.0 mg/l.
 - Scale: <0.1; 0.25; 0.5; 1.0; 1.5; 2.0; 3.0; 5.0; 10.0.
 - Includes compensation system, color chart, syringe, 2 glas cuvettes and dosage spoon.

Art. no.	Content For	UP
28021	50 tests	3



JBL pH Test 3.0 - 10.0

- Fast test to measure acidity of water**
- For approx. 80 measurements.
 - Only 4 drops per test.
 - For fresh water and salt water.
 - Graduation: 0.5 pH increments.
 - Colour scale with 14 colours from red to yellow and green to violet.

Art. no.	Content For	UP
25342	80 tests	6
25343	Reagent	1



JBL KH Test

- Carbonate hardness test**
- Recommended level for fresh water: 4-8° dKH.
 - 1 drop = 1° dKH.
 - Colour change from blue to yellow.
 - The number of used drops = level of carbonate hardness.
 - For this reason this test does NOT require a color scale.
 - The most important text in aquatics since the KH stabilizes the pH value.

Art. no.	UP
25360	6
25361	1



JBL Copper Test Cu

- Copper test**
- Recommended level for odinium treatment: 0.3 mg/l Cu
 - Accurate test for determining the copper content in freshwater and saltwater tanks. Range of values:< 0.1; 0.1; 0.2; 0.3; 0.45; 0.6; 0.8; 1.2; 1.6 mg/l.
 - Can also be used to check tap water, which should not contain any copper.
 - Helpful in administering medications and preparations containing copper, as the copper content should never exceed 0.3 mg/l, whilst insufficient doses will not result in a cure.

Art. no.	Content For	UP
25404	50 tests	3
25405	Reagent	1



JBL EasyTest 6in1

- 6-fold test strips for quick water testing**
- 50 test strips.
 - NEW: With a chlorine test (disinfectant in tap water).
 - pH test from 6.4 to 9.0 (acidity of the water).
 - KH test from 0 to 20 °dKH (pH stability of the water).
 - GH test from <1 to > 21 °dGH (general hardness).
 - Nitrite (NO₂) from 0 to 10 mg/l (poisonous nitrogen compound).
 - Nitrate (NO₃) from 0 to 250 mg/l (cause of algae).

Art. no.	Content For	UP
25339	50 tests	6





JBL Pond Thermometer

Floating pond thermometer

- Very precise indication of all water temperatures up to 50 °C.
- With a 5 m long, unobtrusive black nylon cord to pull the thermometer easily out of the pond.
- The pond water temperature is important to monitor the oxygen content. Warm water absorbs less oxygen.
- 20 cm long thermometer in inconspicuous blue.

Art. no.	Length	Width	UP
28011			1



JBL Pond Fish Net, coarse

Robust pond fishing net in 2 sizes

- 30,5 x 20,5 cm coarse net with telescopic handle 90 cm.
- 35 x 30 cm coarse net with telescopic handle 190 cm.

Art. no.	Length	Width	UP
28705	90 cm	30,5 cm	1
28701	190 cm	35 cm	1

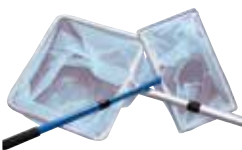


JBL Pond Fish Net, fine

Fine pond fishing net in 2 sizes

- 30,5 x 20,5 cm fine net with a telescopic handle 90 cm.
- 35 x 30 cm fine net with a telescopic handle 190 cm.

Art. no.	Length	Width	UP
28706	90 cm	30,5 cm	1
28702	190 cm	35 cm	1



Achieve optimum sales placement of JBL Pond Products. Let us help you.

JBL has created a large selection of presentation options for its pond products. This way, JBL helps you with your product presentation by providing professional support ranging from shelf presentation or a comprehensive sales display in grid shelving units to sales islands and special placement and secondary placement displays. Merchandising through your product presentation couldn't be easier. Our displays are oriented to standard sizes, so that they can be integrated perfectly into any sales area.

Video presentations can help customers better understand complex products right at the shelf without a need for additional staff. Attractive advertising materials enhance sales support directly at the point of sale.









"What can we do for you?", our field service team asks you. Contact us and we will prepare a complete product range presentation for optimum sales.





JBL offers you attractive product presentation that is ideally suited for the space you have available and fits your needs.

Don't hesitate - contact us directly! We will assist you with a product presentation concept tailored to your needs. Optimise your sales, maximise your revenue with JBL products.





Promotion Consumer > Folder

	JBL catalogue 2015 Colour catalogue of all aquarium and terrarium products <ul style="list-style-type: none">• Describes all JBL aquarium and terrarium products in words and pictures.• Over 1000 photos.• With information pages: feeding tables, fish disease charts, CO₂ chart etc.• With preview and registration form for the upcoming JBL Expedition.	Art. no. 95461	Language DE/EN/ FR/NL/IT	UP 1	
	JBL Pond product catalogue 2015 Full colour catalogue of all pond products <ul style="list-style-type: none">• Describes all JBL products for garden ponds in words and pictures.• Over 200 full colour photos.• With information pages: new products, advantages of JBL packaging, ways of presentation, koi-food concept, advantages of JBL pond fish food, fish diseases, use of UV-C and JBL expeditions.	Art. no. 95463	Language DE/EN/ FR/NL/IT	UP 1	
	JBL Pond Folder 1-2-3 Algae-Free Brochure on how to solve algae problems in ponds <ul style="list-style-type: none">• Coloured brochure of 20 pages.• A5 format.• Explains the JBL 1-2-3 Algae-Free concept that leads to ponds that are free of algae – with money-back guarantee.	Art. no. 97264	Language DE/EN/FR	UP 25	
	JBL Folder Pond fish feeding Brochure on how to feed pond fish <ul style="list-style-type: none">• Coloured brochure of 20 pages.• A5 format.• Answers all the questions related to feeding: How much? Which food? Ingredients, holiday time, seasons, which species eat which food.	Art. no. 97280	Language DE/EN/FR	UP 25	









Promotion Consumer > Samples pond

	JBL PondCheck GRATIS KH-Fast Test for Pond <ul style="list-style-type: none">• Sample - not meant for sale.• 50 Tests.• Indicates by color change from blue to yellow-orange whether there is carbonate hardness to stabilise the water.	Art. no. 99014		UP 12	
---	--	--------------------------	--	----------	---







Promotion Shop > Miscellaneous

	<h3>JBL Water Analysis</h3> <p>To record all water analysis results.</p> <ul style="list-style-type: none">• Suggested problem solutions for all results.• With CO₂ chart.• For freshwater, marine aquariums and garden ponds.• DIN A 4 size.	Art. no.	Language	UP		
		96064	DE/EN/ FR/NL/IT	1		
	<h3>JBL Note pad</h3> <p>Note pad with 50 pages.</p> <ul style="list-style-type: none">• Size: 15 cm x 7 cm.	Art. no.	Content	Size	UP	
		95450	50 sheets	15x7 cm	10	

Promotion Shop > Packaging/dosing dispenser

	JBL Fish Bags - XL Extra large top-quality fish bags <ul style="list-style-type: none">• Rounded heat-sealed corners on the bottom• Size: 30 cm x 60 cm.	Art. no. 95423	Length 60 cm	Width 30 cm	UP 25	
	JBL Rubber rings (rubber bands) 1 kg for (e.g.) fish bags of all sizes	Art. no. 95260	Weight 1000 g	Content ~ 3000 pcs	UP 1	
	JBL Carrier Bag Strong plastic transport bag. <ul style="list-style-type: none">• Size incl. carrier handles: approx.: 26 cm x 50 cm.	Art. no. 95400	Length 50 cm	Width 26 cm	UP 50	
	JBL dosing dispenser for AccliPond 500ml To protect fish during transport <ul style="list-style-type: none">• Added to the transport water this provides fish with wide-reaching protection against infections.• Doses per stroke 0.2 ml JBL AccliPond for 4 liters water.• Fits on the 500 ml JBL AccliPond bottle.	Art. no. 95263			UP 1	

Shop fitting > Shelving miscellaneous

	JBL Hanging strips 6 items <ul style="list-style-type: none">• Provides a means for exhibiting up to 6 products (with a hanging hole) at variable locations.• Equipped with an eyelet on the upper end for hanging items up (ideal with an adhesive hook or s-shaped hook).	Art. no. 97234			UP 1	
	JBL Business Card Holder Rack holder for cards <ul style="list-style-type: none">• Can be hung directly on the rack. For approx. 25 cards (for example for the Online Hospital cards)	Art. no. 95140			UP 1	
	JBL Card - Online Hospital/Pond Lab Business card with direction to JBL Online Hospital/Pond Lab <ul style="list-style-type: none">• Coloured reference card in a convenient cheque card size for the two most popular online help systems on the JBL homepage.• Size: 8.5 cm x 5.5 cm. One size shows the reference to the JBL Online Hospital, the other to the JBL Pond Lab.• One sales unit contains 30 cards.• Eine VE enthält 30 Karten.	Art. no. 95130	Language DE/EN		UP 30	

Shop fitting > Shelf talker + accessories



JBL Shelf talker

Shelf talker "New" for mounting on shelf

Art. no.
97849

UP
1



JBL shelf strips for pond care

5 replacement strips for pond displays

- Exclusively for plastic pond display (2012).
- For green shelf panels, see Art. No. 9730700 Pond Shelf Strips (3-colour system).

Art. no.
97883

Language
DE

UP
1



JBL Shelf Tag - Ponds

Explains the JBL 1-2-3 Algae Free concept

- A4 format. Printed on both sides with a hole for attachment to a rack.
- Waterproof laminated.

Art. no.
97018

Language
DE/EN

UP
1



JBL poster 1-2-3 algae free

Explains the JBL 1-2-3 Algae Free concept

- Laminated poster, approx. 1m long.

Art. no.
97313

Language
DE

UP
1

Shop fitting > Sticker



JBL Sticker (18x12cm) – from outside

Oval sticker

- 18 x 12 cm
- To be applied on outside.

Art. no.
95011

UP
1



Promotion > Miscellaneous



Video system

Screen for movies

- For individual use by JBL sales representatives.
- 16 : 9 screen.
- Movies loaded via USB stick.

Art. no.
97259

UP
1



JBL Show Roll Up Stand 1x2m

Roll-Up Banner Display

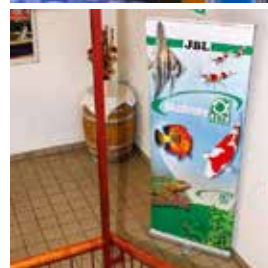
- Easy build panel with dimensions 1m x 2m.
- Text: JBL Academy.
- Can be built by one person in three minutes.
- For use by JBL Representatives.
- Customized panel (design and requirements)
- is available through the JBL Fanshop on the JBL Website.
- Delivery time: max. 2 weeks.

Art. no.
97315

Language
100 cm

Height
200 cm

UP
1



The JBL academy:

practical and clear specialist training for you

The JBL academy team offers you a wide range of opportunities to gain or to deepen your expert knowledge. These vary from research expeditions to the tropical homelands of the ornamental fish and terrarium animals (www.jbl.de/en/expeditions), to specialist seminars right up to workshops for children at German lakes.

We place special emphasis on explaining the sometimes complex processes in a comprehensible way, and we always back up our message with practical demonstrations or experiments. You will find the courses currently on offer at the JBL academy here: www.jbl.de/de/akademie



Why not visit us on the Internet and get to know JBL Online.



All the latest information on your hobby and JBL, 24 hours a day, 365 days a year; just a mouse-click away.

Navigation

Navigate safely and easily through the JBL website here. Information on keeping aquariums, terrariums and garden ponds - all just a mouse-click away.

FAQs and solutions to problems
Frequently asked questions - the answers are here.

Online lab

Our new interactive Online Lab for fast, reliable analysis of the water values of your aquarium.

JBL Online Hospital

Sick fish? The right diagnosis at the click of a mouse with JBL ONLINE HOSPITAL on your computer!

Product information

Interesting information on JBL products, facts, figures, background information.

And much more

Such as download options for JBL advice sheets, photo gallery, reports, e-cards ...



JBL Online Lab

Fast, reliable analysis of your water measurements in only 4 steps. Problem-based or a full professional analysis for every type of water.

JBL Online Hospital

Sick fish? The right diagnosis at the click of a mouse with JBL ONLINE HOSPITAL on your computer!
Search function
Picture-based diagnosis
Text-based diagnosis
Therapy

 facebook.jbl.de

Experiencing nature means understanding nature



The JBL research team undertakes yearly expeditions to the home biotopes of ornamental fish and terrarium animals to explore and understand their habitats. Only then are we able to recreate these biotopes in aquariums and terrariums. This leads to breeding these animals, thus preventing the removal of species from the wild.

If you love nature and enjoy spending time surrounded by nature with like-minded people, then JBL expeditions are just the thing for you! Both on land but also snorkelling or diving in the water you will be given the opportunity to carry out first-hand research into aquarium and terrarium animals - in the jungle, in the desert and on the coral reef.

You only need a basic physical fitness, a strong connection to nature, the willingness to stay overnight in the outdoors and perhaps also a bit of luck to take part in a JBL expedition. Should there be more applications than available spaces, potential participants will be drawn on a lottery basis. Newly interested parties are always given priority over "repeaters".

www.jbl.de/en/expeditions

JBL

forward thinking · reliable · loyal to specialist retailers



Joachim Böhme
founded the company,
JBL, in Ludwigshafen in 1960.
Over a period of 55 years, the small
family business has developed into one
of the leading suppliers of the aquarium,
terrarium and pond trade.

Today JBL exports to over 65 countries and, with
over 1000 articles, has one of the largest ranges of
aquarium products in the world.

In the plant Neuhofen/Pfalz, where the expanding com-
pany has been located since 1984, production is focused
on fish food and water care products.




JBL GmbH & Co. KG
Dieselstraße 3
67141 Neuhofen
Germany

Phone:
Tel.: +49 (0) 6236 4180-0
Fax: +49 (0) 6236 4180999

Export Sales:
Tel.: +49 (0) 6236 4180200
Fax: +49 (0) 6236 4180201

E-Mail: info@jbl.de
Internet: www.jbl.de

 facebook.jbl.de



9746910 V01