
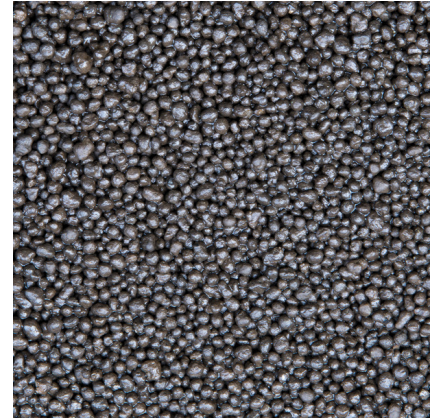




JBL PROSCAPE PLANT SOIL BROWN

Brown freshwater substrate for aquascaping

Suitable for: 



- Complete nutrient substrate for aquatic plants: special substrate for aquascaping aquariums
- Vital plant growth: optimal oxygen supply and circulation due to medium grain size
- Immediate nutrient and mineral supply for plants
- Tropical water values: slightly acidic pH values and low carbonate hardness. Reduces water hardness – water becomes soft
- Contents: 1 bag ProScape PlantSoil Brown



JBL PROSCAPE PLANT SOIL BROWN



Product information

Underwater gardeners


Aquascaping is the term used to describe the technique of designing aquarium landscapes. This is the place for plant compositions, for the reproduction of a landscape above water or for natural biotopes. An aquascaping aquarium contains no or few fish and invertebrates. This way the nutrient supply for plants is reduced and their growth is limited. Nitrogens, phosphorus and other minerals become scarce substances and need precise re-dosing. The plants need light, CO₂ and the right nutrients for their healthy growth in a beautiful underwater landscape.

Rich in minerals

ProScape soils are dedicated substrates which have been especially adapted to the requirements of aquascapers. Soils are not neutral to water, but have a softening effect. They make the water softer and acidify the water just enough to slide the pH value slightly into the acidic range. The JBL PlantSoils are rich in nutrients and immediately supply the plants with both nutrients and minerals, whereas ShrimpsSoils are lower in nutrients.

Use:

Rinse the substrate briefly in tap water to wash away any abrasion caused in transport. To avoid accumulation of minerals in the water, carry out a 50 % water change every 2 to 3 days in the first two weeks after filling. The softening effect decreases in the course of time because the influence of the water values depend on the input water values and the intervals between the water changes.

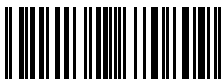

| Further information | |
|-----------------------|---|
| FAQ | ✓ |
| Blog | ✓ |
| Press | ✓ |
| Laboratory/calculator | ✗ |
| Worth reading | ✓ |
| Spare parts | ✗ |
| Video | ✓ |
| GarantiePlus | ✗ |
| Instructions | ✓ |
| QR code |  |



JBL PROSCAPE PLANT SOIL BROWN



Product details

| Article data | | |
|--------------------------|---|---|
| Product name | JBL PROSCAPE PLANT SOIL BROWN 3 l | JBL PROSCAPE PLANT SOIL BROWN 9 l |
| Art. No. | 6708000 | 6708100 |
| EAN number | 4014162670809 | 4014162670816 |
| EAN as barcode |  |  |
| Content | 3 l | 9 l |
| - | - | - |
| Expiry months | - | - |
| RRP incl. VAT | 22,87 € | 53,40 € |
| Base price | 7.62 € | 5.93 € |
| Nominal filling quantity | 3 l | 9 l |
| Base quantity | 1 l | 1 l |
| Gross weight | 3025 g | 9045 g |
| Net weight | 3000 g | 9000 g |
| Weight change | 1000 | 1000 |

| Disposal | | |
|-------------------------|-----------------------------------|-----------------------------------|
| Product name | JBL PROSCAPE PLANT SOIL BROWN 3 l | JBL PROSCAPE PLANT SOIL BROWN 9 l |
| Art. No. | 6708000 | 6708100 |
| Green dot | ✓ | ✓ |
| Group electronic waste | - | - |
| Disposal weight | - | - |
| Battery type | - | - |
| Battery return | - | - |
| Battery rechargeable | - | - |
| Disposal weight battery | - | - |
| Non-returnable glass | - | - |
| PPK | - | - |
| Plastic small | 25 g | 45 g |
| Plastic large | - | - |
| Disposal weight metal | 0 g | 0 g |

| Features | | |
|--------------|-----------------------------------|-----------------------------------|
| Product name | JBL PROSCAPE PLANT SOIL BROWN 3 l | JBL PROSCAPE PLANT SOIL BROWN 9 l |
| Art. No. | 6708000 | 6708100 |



| Features | | |
|----------------------|---|---|
| Animal species | Armored catfish, Arowana, Axolotl, Barbels, Bettas, Bichirs/ reedfish, Blowfish, Catfish, Cichlids (South America), Clawed frogs, Clawed shrimps, Crayfish, Crustaceans, Danions, Discus, Dwarf crayfish, Dwarf shrimps, Flowerhorn, Gill maggots, Goldfish, Gouramis, Guppy, Juvenile fish, Killifish, Livebearers, Loaches, Mussels, Newts, Panchaxes, Rainbowfish, Snails, Spiny eels, Tetra, Veiltails, blood parrot cichlids, freshwater butterflyfish | Armored catfish, Arowana, Axolotl, Barbels, Bettas, Bichirs/ reedfish, Blowfish, Catfish, Cichlids (South America), Clawed frogs, Clawed shrimps, Crayfish, Crustaceans, Danions, Discus, Dwarf crayfish, Dwarf shrimps, Flowerhorn, Gill maggots, Goldfish, Gouramis, Guppy, Juvenile fish, Killifish, Livebearers, Loaches, Mussels, Newts, Panchaxes, Rainbowfish, Snails, Spiny eels, Tetra, Veiltails, blood parrot cichlids, freshwater butterflyfish |
| Animal size | For all animal sizes | For all animal sizes |
| Animal age group | All aquarium fish | All aquarium fish |
| Volume of habitat | 12-25 L (30-40cm) | 112 L (80 cm) |
| Material | soil | soil |
| Food type | - | - |
| Colour | brown | brown |
| Dosage | - | - |
| Transport conditions | - | - |



JBL PROSCAPE PLANT SOIL BROWN

| Electronic label / illuminant | | |
|-------------------------------|-----------------------------------|-----------------------------------|
| Product name | JBL PROSCAPE PLANT SOIL BROWN 3 l | JBL PROSCAPE PLANT SOIL BROWN 9 l |
| Art. No. | 6708000 | 6708100 |
| Ambient temperature | - | - |
| Start time | - | - |
| Mercury | - | - |
| Tube length | - | - |
| Service life | - | - |
| Lumen | - | - |
| CRI value | - | - |
| Dimmable | - | - |
| Switching cycles | - | - |
| PAR value | - | - |
| Energy efficiency class | - | - |
| UV-A | - | - |
| UV-B | - | - |
| UV-C | - | - |
| Colour temperature | - | - |
| Base designation | - | - |

| Technical data | | |
|-------------------------------|-----------------------------------|-----------------------------------|
| Product name | JBL PROSCAPE PLANT SOIL BROWN 3 l | JBL PROSCAPE PLANT SOIL BROWN 9 l |
| Art. No. | 6708000 | 6708100 |
| Range in litres | - | - |
| Range from - to | - | - |
| Range in days | - | - |
| Range tank length | - | - |
| Output in watts | - | - |
| Output per hour | - | - |
| Output per day | - | - |
| Height | 400 mm | 430 mm |
| Length | 280 mm | 340 mm |
| Width | 27 mm | 62 mm |
| Diameter | - | - |
| Voltage | - | - |
| For | - | - |
| T8 26mm (watt) | - | - |
| T5 16mm (watt) | - | - |
| Size | - | - |
| Content for | - | - |
| Filter container volume | - | - |
| Volume filter media | - | - |
| Hose connections pressure/out | - | - |
| Hose connections suction/in | - | - |



| Technical data | | |
|----------------|---|---|
| Delivery head | - | - |





JBL PROSCAPE PLANT SOIL BROWN

| | |
|------------------|---|
| Food type | - |
| Sub product type | - |
| Dosing | - |





Additional information for the specialist trade sector

| Article data | | |
|----------------------|-----------------------------------|-----------------------------------|
| Product name | JBL PROSCAPE PLANT SOIL BROWN 3 l | JBL PROSCAPE PLANT SOIL BROWN 9 l |
| Art. No. | 6708000 | 6708100 |
| VAT | 19% | 19% |
| Sales unit (SU) | 5 | 1 |
| Volume packaging | 3.36l | 10.2l |
| Dimensions (l/w/h) | 30 mm/280 mm/400 mm | 70 mm/340 mm/430 mm |
| Layer | 40 | 16 |
| Pallet | 200 | 80 |
| Category of products | 2 | 2 |
| Customs tariff | 38249996 | 38249996 |
| Country of origin | CN | CN |
| Type of packaging | Bag / sack | Bag / sack |

| PU 1 data | | |
|------------------|-----------------------------------|-----------------------------------|
| Product name | JBL PROSCAPE PLANT SOIL BROWN 3 l | JBL PROSCAPE PLANT SOIL BROWN 9 l |
| Art. No. | 6708000 | 6708100 |
| PU 1 material | cardboard gr | cardboard gr |
| PU 1 weight | 600 g | 620 g |
| PU 1 length | 300 mm | 400 mm |
| PU 1 width/depth | 400 mm | 300 mm |
| PU 1 height | 185 mm | 200 mm |

| PU 2 data | | |
|------------------|-----------------------------------|-----------------------------------|
| Product name | JBL PROSCAPE PLANT SOIL BROWN 3 l | JBL PROSCAPE PLANT SOIL BROWN 9 l |
| Art. No. | 6708000 | 6708100 |
| PU 2 material | - | - |
| PU 2 weight | - | - |
| PU 2 length | - | - |
| PU 2 width/depth | - | - |
| PU 2 height | - | - |

| Trade data | | |
|-------------------|-----------------------------------|-----------------------------------|
| Product name | JBL PROSCAPE PLANT SOIL BROWN 3 l | JBL PROSCAPE PLANT SOIL BROWN 9 l |
| Art. No. | 6708000 | 6708100 |
| Till receipt text | PlantSoil 3l BR | PlantSoil 9l BR |
| Shelf placement | - | - |