



JBL PROFLORA u502

Plant fertiliser system with night switch-off

Suitable for:



- CO2 fertiliser system for the best feeding of fast and slow growing plants in freshwater aquariums up to 600 l (max. 120 cm)
- Assemble system, attach diffuser in the aquarium and adjust CO2 supply that way that the permanent test indicates optimum value
- Professional plant care with night switch-off: precise dosing by means of pressure reducer, even release, effective distribution due to extendable diffuser, best monitoring with bubble counter, CO2/pH test, residual pressure display on pressure gauge
- TÜV tested storage cylinder, hose screw connection prevents hose from slipping, check valve prevents water entering the cylinder
- Package contents: disposable 500 g CO2 cylinder, pressure reducer, night switch-off (time switch sold separately), diffuser, bubble counter with backflow stop, 3 m CO2-proof hose, CO2/pH test, basic and daily fertiliser

You may also be interested in

You can find a complete overview here: <https://www.jbl.de/qr/63182>



JBL PROFLORA m501
CO2 plant fertiliser system
complete kit



JBL PROFLORA m502
CO2 plant fertiliser system with
night switch-off



JBL PROFLORA m503
Aquarium plant fertiliser
system with pH control



JBL PROFLORA m2003
Plant fertiliser system & 2 kg
cylinder & pH control





JBL PROFLORA u502

Accessories



JBL Suction cup with clip 37 mm

Rubber suction cup with clip for objects of 37-45 mm



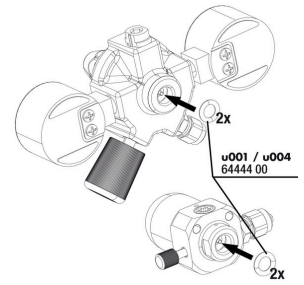
JBL PROFLORA Direct

High performance direct diffuser for CO₂



JBL PROFLORA pH-Control Touch

Measurement and control computer for control of CO₂/pH



JBL ProFlora "u" O-ring seal



JBL PROFLORA Adapt u-m

Conversion adapter for the change over from disposable to refillable cylinder system



JBL PROFLORA 3 x u500

CO₂ disposable storage cylinder



JBL PROFLORA u500

500 g disposable CO₂ storage cylinder



JBL PROFLORA CO₂ Count Safe

Bubble counter with backflow stop



JBL PROFLORA SafeStop

Water backflow stop for CO₂ systems



JBL PROFLORA T3

Special hose for CO₂ systems in aquariums



JBL PROFLORA v002

Noiseless solenoid valve



JBL PROFLORA Taifun Extend

Extension for CO₂ high-performance diffuser



JBL PROFLORA u502

Accessories



JBL PROFLORA Taifun M
CO2 high-performance diffuser



JBL PROFLORA Taifun S
Extendable CO2 diffuser for
small aquariums



JBL PROFLORA Taifun P
Mini CO2 diffuser for nano
freshwater aquariums

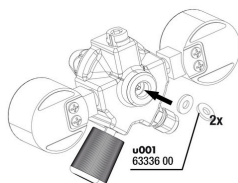


JBL PROFLORA u502

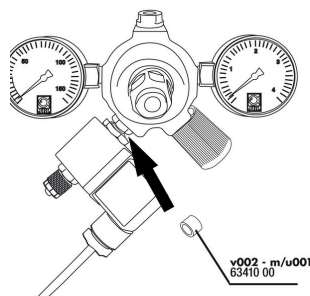
Spare parts



JBL ProFlora Allen key
6mm



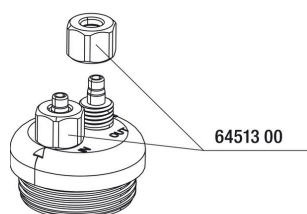
JBL ProFlora "u" flat
seal



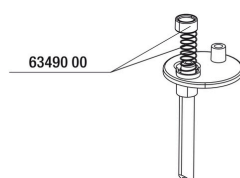
JBL ProFlora "u/m" flat
seal



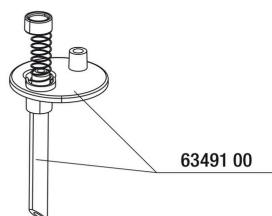
JBL adapter UK for all
flat-pin plugs



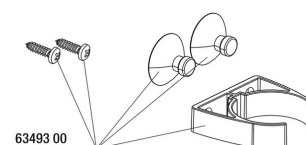
JBL Cap Nut Air/CO₂
hose



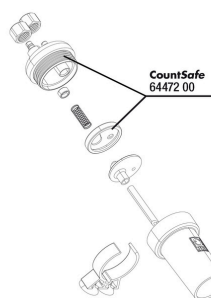
JBL CO2 Count safe
spring + seal



JBL CO2 Count safe
retaining plate



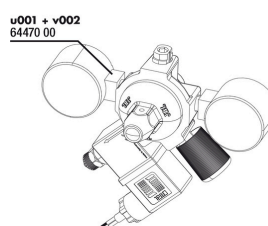
JBL CO2 Count safe
holder kit



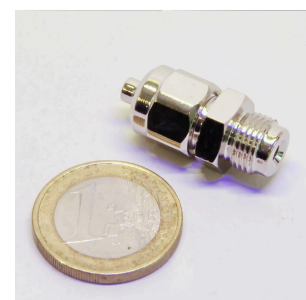
JBL CO2 Count safe
seal plate



JBL CO2 Permanent
colour charts



JBL ProFlora u001+
v002



JBL tube screw
connection 4/6
pressure reducer



JBL PROFLORA u502



Product information

Nutrition for aquarium plants

Plants provide the aquarium with vital oxygen for the aquarium dwellers, prevent algae growth, remove pollutants, provide hiding places and reduce pathogens. The JBL plant fertiliser system supplies the plants with the main nutrient CO₂ through the water. They absorb this through their leaves.

Easy to install

The system comes completely ready for connection. Screw the pressure reducer onto the CO₂ storage cylinder. Connect the pressure reducer with the hose to the diffuser in the aquarium. The CO₂ enters the aquarium and is dissolved in the water by the diffuser. The CO₂ supply can be interrupted at night by adding a solenoid valve.

Safe

The storage cylinder is TÜV tested. Thanks to the check valve no water can enter the cylinder. The capacity of a CO₂ system depends on various factors. The carbonate hardness, the quantity and species of the plants and the strength of the water surface movement are decisive. A 500 g cylinder which is not switched off by a solenoid valve during the night lasts with its default adjustment for about 4 months.

Further information	
FAQ	✓
Blog	✓
Press	✓
Laboratory/calculator	✗
Worth reading	✓
Spare parts	✓
Video	✓
GarantiePlus	✗
Instructions	✓
QR code	



JBL PROFLORA u502

Food type	-
Sub product type	-
Dosing	-



JBL PROFLORA u502

Safety information

- safety information in accordance with GHS	
Signal word	Warning
Hazard symbol	
Risk phrase	H280: Contains gas under pressure; may explode if heated.
safety note	P101: If medical advice is needed, have product container or label at hand. P102: Keep out of reach of children. P103: Read label before use. P410+P403: Protect from sunlight. Store in a well-ventilated place.

Further safety information	
Safety instructions	✓
QR code	