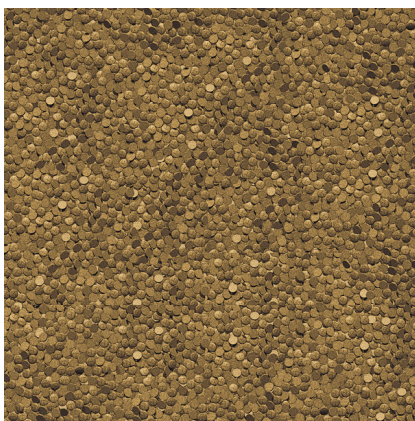




# JBL PROPOND SPRING S

Spring food for small koi

Suitable for:



- Complete food with the right protein/fat ratio 3:1 in accordance with the NEO index which takes temperature, function, animal size and age into account
- With salmon, soya, shrimps, wheat, spinach and spirulina for vigorous and healthy koi (at 10-20 °C water temperature)
- Food size S (3 mm) for fish from 15-35 cm
- Floating food wafers with 25 % protein, 8 % fat, 3 % crude fibre and 8 % crude ash.
- Food wafers in resealable bag (air, water and lightproof) for the preservation of quality



You may also be interested in

You can find a complete overview here: <https://www.jbl.de/qr/41209>



## JBL PROPOND WINTER M

Winter food for medium-sized koi



## JBL PROPOND SUMMER S

Summer food for small koi



## JBL PROPOND SUMMER M

Summer food for medium-sized koi



## JBL PROPOND SUMMER L

Summer food for large koi




# JBL PROPOND SPRING S



## Product information

NEO index literally means: natural, energy-optimised nutrition. Behind this lies the ratio of proteins to fats in the food. Looking at the season alone, the fish would only need half as much protein in winter (2:1) as in summer (4:1). But because not only the season (meaning the water temperature), but also the size and age of the fish, and food function (e.g. growth food = ProPond Growth) play determining roles, the der NEO index has been developed to deal with all these factors in one.

With JBL ProPond Spring you can clearly see that the NEO index alone is not yet decisive: The NEO index for spring and autumn food is identical at 3:1, although the food composition is totally different! Because spring and autumn have the same water temperatures the proper protein/fat ratio is 3:1 but the purposes of the foods are very different and therefore also their composition: In spring the fish need to be made fit and pepped up after the stress of winter, to fend off spring viremia etc. In autumn, on the other hand, the fish are expected to live off their fat reserves to stay healthy through the coming winter. Furthermore there is the different sinking behaviour of the food: In spring the fish become active again and may come to the water surface for feeding (this is your opportunity to check them for any diseases). That's why the spring food floats. In autumn however the fish need to relax and eat at the bottom, Therefore the autumn food is designed to sink.




Further information	
FAQ	✓
Blog	✓
Press	✓
Laboratory/calculator	✗
Worth reading	✓
Spare parts	✗
Video	✓
GarantiePlus	✗
Instructions	✓
QR code	



# JBL PROPOND SPRING S



## Product details

Article data			
Product name	JBL PROPOND SPRING S 1.1 kg	JBL PROPOND SPRING S 2.1 kg	JBL PROPOND SPRING S 0.36kg
Art. No.	4120900	4121000	4121300
EAN number	4014162412096	4014162412102	4014162412133
EAN as barcode			
Weight	1,1 kg	2,1 kg	0,36 kg
Size	3 l	6 l	1 l
Expiry months	36	36	36
RRP incl. VAT	25,15 €	42,11 €	9,60 €
Base price	22.86 €	20.05 €	26.67 €
Nominal filling quantity	1.1 kg	2.1 kg	0.36 kg
Base quantity	1 kg	1 kg	1 kg
Gross weight	1138 g	2154 g	439.956 g
Net weight	1100 g	2100 g	360 g
Weight change	-	-	-

Disposal			
Product name	JBL PROPOND SPRING S 1.1 kg	JBL PROPOND SPRING S 2.1 kg	JBL PROPOND SPRING S 0.36kg
Art. No.	4120900	4121000	4121300
Green dot	✓	✓	✓
Group electronic waste	-	-	-
Disposal weight	-	-	-
Battery type	-	-	-
Battery return	-	-	-
Battery rechargeable	-	-	-
Disposal weight battery	-	-	-
Non-returnable glass	-	-	-
PPK	-	-	-
Plastic small	38 g	-	79.96 g
Plastic large	-	54 g	-
Disposal weight metal	0 g	0 g	0 g

Features			
Product name	JBL PROPOND SPRING S 1.1 kg	JBL PROPOND SPRING S 2.1 kg	JBL PROPOND SPRING S 0.36kg
Art. No.	4120900	4121000	4121300
Animal species	Goldfish, Koi, Veiltails	Goldfish, Koi, Veiltails	Goldfish, Koi, Veiltails
Animal size	15 - 35 cm	15 - 35 cm	15 - 35 cm
Animal age group	Small koi	Small koi	Small koi
Volume of habitat	For all ponds	For all ponds	For all ponds
Material	You will find details of the materials used under Details & Composition	You will find details of the materials used under Details & Composition	You will find details of the materials used under Details & Composition





Features			
Food type	food wafer	food wafer	food wafer
Colour	green / brown	green / brown	green / brown
Dosage	Feed 1 – 2 times a day, as much as can be eaten within a few minutes	Feed 1 – 2 times a day, as much as can be eaten within a few minutes	Feed 1 – 2 times a day, as much as can be eaten within a few minutes
Transport conditions	-	-	-



# JBL PROPOND SPRING S

Electronic label / illuminant			
Product name	JBL PROPOND SPRING S 1.1 kg	JBL PROPOND SPRING S 2.1 kg	JBL PROPOND SPRING S 0.36kg
Art. No.	4120900	4121000	4121300
Ambient temperature	-	-	-
Start time	-	-	-
Mercury	-	-	-
Tube length	-	-	-
Service life	-	-	-
Lumen	-	-	-
CRI value	-	-	-
Dimmable	-	-	-
Switching cycles	-	-	-
PAR value	-	-	-
Energy efficiency class	-	-	-
UV-A	-	-	-
UV-B	-	-	-
UV-C	-	-	-
Colour temperature	-	-	-
Base designation	-	-	-

Technical data			
Product name	JBL PROPOND SPRING S 1.1 kg	JBL PROPOND SPRING S 2.1 kg	JBL PROPOND SPRING S 0.36kg
Art. No.	4120900	4121000	4121300
Range in litres	-	-	-
Range from - to	-	-	-
Range in days	-	-	-
Range tank length	-	-	-
Output in watts	-	-	-
Output per hour	-	-	-
Output per day	-	-	-
Height	320 mm	395 mm	-
Length	195 mm	250 mm	-
Width	70 mm	85 mm	-
Diameter	-	-	-
Voltage	-	-	-
For	-	-	-
T8 26mm (watt)	-	-	-
T5 16mm (watt)	-	-	-
Size	-	-	-
Content for	-	-	-
Filter container volume	-	-	-
Volume filter media	-	-	-
Hose connections pressure/out	-	-	-
Hose connections suction/in	-	-	-
Delivery head	-	-	-

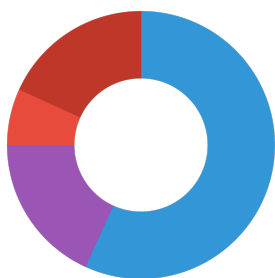




# JBL PROPOND SPRING S

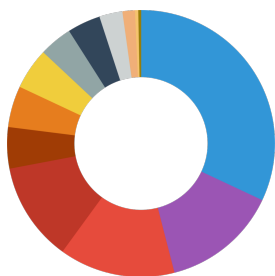
Food type	food wafer
Sub product type	complete food for ornamental fish
Dosing	Feed 1 - 2 times a day, as much as can be eaten within a few minutes

## Analytical components



Crude protein	25 %
Fat content	8 %
Crude fibre	3 %
Crude ash	8 %

## Composition



corn meal
salmon meal
soy bean meal
rice meal
shrimp meal
wheat germs
spinach
spirulina
yeast cell wall constituents ( beta glucanes)
yeast extract
minerals
lysine
methionine

## Additives

<b>Colourings</b>
Astaxanthin

### Vitamins, provitamins and other chemically defined substances having a similar effect (per 1000 g)

Vitamin A	25000 I. E.
Vitamin D <sub>3</sub>	2000 I. E.
Vitamin E	300 mg
Vitamin C(stable)	200 mg



## Additional information for the specialist trade sector

Article data			
Product name	JBL PROPOND SPRING S 1.1 kg	JBL PROPOND SPRING S 2.1 kg	JBL PROPOND SPRING S 0.36kg
Art. No.	4120900	4121000	4121300
VAT	27%	27%	27%
Sales unit (SU)	1	1	3
Volume packaging	4.37l	8.4l	1.26l
Dimensions (l/w/h)	70 mm/195 mm/320 mm	85 mm/250 mm/395 mm	90 mm/90 mm/198 mm
Layer	56	28	192
Pallet	280	140	576
Category of products	1	1	1
Customs tariff	23099041	23099041	23099041
Country of origin	DE	DE	DE
Type of packaging	Bag / sack	Bag / sack	can

PU 1 data			
Product name	JBL PROPOND SPRING S 1.1 kg	JBL PROPOND SPRING S 2.1 kg	JBL PROPOND SPRING S 0.36kg
Art. No.	4120900	4121000	4121300
PU 1 material	cardboard gr	cardboard gr	film gr
PU 1 weight	430 g	490 g	9.39 g
PU 1 length	395 mm	360 mm	270 mm
PU 1 width/depth	295 mm	265 mm	90 mm
PU 1 height	285 mm	330 mm	198 mm

PU 2 data			
Product name	JBL PROPOND SPRING S 1.1 kg	JBL PROPOND SPRING S 2.1 kg	JBL PROPOND SPRING S 0.36kg
Art. No.	4120900	4121000	4121300
PU 2 material	None	None	cardboard gr
PU 2 weight	-	-	468 g
PU 2 length	-	-	284 mm
PU 2 width/depth	-	-	374 mm
PU 2 height	-	-	408 mm

Trade data			
Product name	JBL PROPOND SPRING S 1.1 kg	JBL PROPOND SPRING S 2.1 kg	JBL PROPOND SPRING S 0.36kg
Art. No.	4120900	4121000	4121300
Till receipt text	PP Spring S1.1	PP Spring S2.1	PP SpringS 0.36
Shelf placement	-	-	-