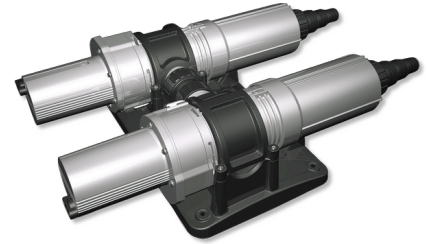




JBL PROCRISTAL UV-C QuickConnect

Connects two JBL ProCristal UV-C water clarifiers

Suitable for:



- Can simply be screwed on inlet or outlet of a UV-C water clarifier to connect it with a second device
- Doubles the performance by connecting two devices
- The connection of more than two devices is possible. Only the pump output needs to be adjusted or checked
- Threaded connection: 1 ½ " connection. Also fits other systems.
- Contains 1 connection piece with 2 seals




JBL PROCRISTAL UV-C QuickConnect



Product information

UV-C water clarifiers help you to remove white and green water clouding quickly, easily and without a hitch. The UV-C radiation with a wavelength of 200-280 nm has a germicidal effect and thus can combat the cause of the clouding (whitish = bacteria/greenish = floating algae). The water of the aquarium or pond is pumped through the UV-C clarifier with a recommended pump performance where the UV-C radiation kills off the germs in the water as it passes through. The water amount flowing through the clarifier therefore needs to be adapted so that it is not too high! There is a table on the packaging to give you information about the right pump size.

Two or more JBL ProCristal UV-C water clarifiers can be connected to each other using the JBL ProCristal UV-C QuickConnect. The performance of the devices add up and the "double device" is then suitable for a higher water amount.

| Further information | |
|-----------------------|---|
| FAQ | ✓ |
| Blog | ✓ |
| Press | ✗ |
| Laboratory/calculator | ✗ |
| Worth reading | ✓ |
| Spare parts | ✗ |
| Video | ✓ |
| GarantiePlus | ✗ |
| Instructions | ✓ |
| QR code |  |






JBL PROCRISTAL UV-C QuickConnect



Product details

| Article data | |
|--------------------------|---|
| Product name | JBL ProCristal UV-C QuickConnect |
| Art. No. | 6036900 |
| EAN number | 4014162603692 |
| EAN as barcode |  |
| For | UV-C |
| - | - |
| Expiry months | - |
| RRP incl. VAT | 10,25 € |
| Base price | - |
| Nominal filling quantity | - |
| Base quantity | 1 |
| Gross weight | 61 g |
| Net weight | 38 g |
| Weight change | 1000 |

| Disposal | |
|-------------------------|----------------------------------|
| Product name | JBL ProCristal UV-C QuickConnect |
| Art. No. | 6036900 |
| Green dot | ✓ |
| Group electronic waste | - |
| Disposal weight | - |
| Battery type | - |
| Battery return | - |
| Battery rechargeable | - |
| Disposal weight battery | - |
| Non-returnable glass | - |
| PPK | 6 g |
| Plastic small | 17 g |
| Plastic large | - |
| Disposal weight metal | 0 g |

| Features | |
|----------------|--|
| Product name | JBL ProCristal UV-C QuickConnect |
| Art. No. | 6036900 |
| Animal species | Arowana, Axoloti, Barbels, Bettas, Bichirs/reedfish, Blowfish, Catfish, Cichlids (South America), Corals, Crayfish, Danions, Discus, Dwarf shrimps, Flowerhorn, Gobies, Goldfish, Gouramis, Guppy, Juvenile fish, Killifish, Koi, Livebearers, Loaches, Mussels, Newts, Panchaxes, Rainbowfish, Snails, Spiny eels, Sturgeons, Terrapins, Tetra, Tropical terrapins, Veiltails, freshwater butterflyfish, turtle |





| Features | |
|----------------------|----------------------|
| Animal size | For all animal sizes |
| Animal age group | All aquarium fish |
| Volume of habitat | For all aquariums |
| Material | plastic (PC) |
| Food type | - |
| Colour | black |
| Dosage | - |
| Transport conditions | - |





JBL PROCRISTAL UV-C QuickConnect

| Electronic label / illuminant | |
|-------------------------------|----------------------------------|
| Product name | JBL ProCristal UV-C QuickConnect |
| Art. No. | 6036900 |
| Ambient temperature | - |
| Start time | - |
| Mercury | - |
| Tube length | - |
| Service life | - |
| Lumen | - |
| CRI value | - |
| Dimmable | - |
| Switching cycles | - |
| PAR value | - |
| Energy efficiency class | - |
| UV-A | - |
| UV-B | - |
| UV-C | - |
| Colour temperature | - |
| Base designation | - |

| Technical data | |
|-------------------------------|----------------------------------|
| Product name | JBL ProCristal UV-C QuickConnect |
| Art. No. | 6036900 |
| Range in litres | - |
| Range from - to | - |
| Range in days | - |
| Range tank length | - |
| Output in watts | - |
| Output per hour | - |
| Output per day | - |
| Height | - |
| Length | - |
| Width | - |
| Diameter | - |
| Voltage | - |
| For | - |
| T8 26mm (watt) | - |
| T5 16mm (watt) | - |
| Size | - |
| Content for | - |
| Filter container volume | - |
| Volume filter media | - |
| Hose connections pressure/out | - |
| Hose connections suction/in | - |
| Delivery head | - |





JBL PROCRISTAL UV-C QuickConnect

| | |
|------------------|---|
| Food type | - |
| Sub product type | - |
| Dosing | - |





Additional information for the specialist trade sector

| Article data | |
|----------------------|----------------------------------|
| Product name | JBL ProCristal UV-C QuickConnect |
| Art. No. | 6036900 |
| VAT | 19% |
| Sales unit (SU) | 2 |
| Volume packaging | 1.3l |
| Dimensions (l/w/h) | 70 mm/96 mm/205 mm |
| Layer | 0 |
| Pallet | 0 |
| Category of products | 3 |
| Customs tariff | 39174000 |
| Country of origin | CN |
| Type of packaging | Skin / blister card packaging |

| PU 1 data | |
|------------------|----------------------------------|
| Product name | JBL ProCristal UV-C QuickConnect |
| Art. No. | 6036900 |
| PU 1 material | cardboard gr |
| PU 1 weight | 58 g |
| PU 1 length | 120 mm |
| PU 1 width/depth | 100 mm |
| PU 1 height | 225 mm |

| PU 2 data | |
|------------------|----------------------------------|
| Product name | JBL ProCristal UV-C QuickConnect |
| Art. No. | 6036900 |
| PU 2 material | cardboard gr |
| PU 2 weight | 575 g |
| PU 2 length | 521 mm |
| PU 2 width/depth | 379 mm |
| PU 2 height | 245 mm |

| Trade data | |
|-------------------|----------------------------------|
| Product name | JBL ProCristal UV-C QuickConnect |
| Art. No. | 6036900 |
| Till receipt text | QuickConnect |
| Shelf placement | - |

