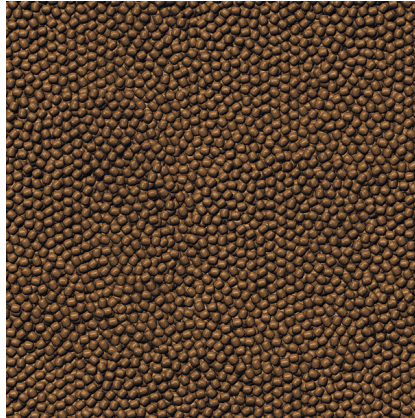




JBL PROPOND GROWTH S

Growth food for small koi

Suitable for:



- Complete food with the right protein/fat ratio 5:1 in accordance with the NEO index which takes temperature, function, animal size and age into account
- With salmon, shrimp, spirulina, fish oil for optimal growth (at 15-25 °C water temperature)
- Food size S (3 mm) for fish from 15-35 cm
- Floating pearls with 46 % protein, 10 % fat, 2 % crude fibre and 10 % crude ash
- Food pearls for growth in resealable bag (air, water and lightproof) for the preservation of quality

You may also be interested in

You can find a complete overview here: <https://www.jbl.de/qr/41293>



JBL PROPOND COLOR S
Colour enhancing food for small koi



JBL PROPOND COLOR M
Colour enhancing food for medium-sized koi



JBL PROPOND COLOR L
Colour enhancing food for large koi



JBL PROPOND FITNESS S
Fitness food for active koi





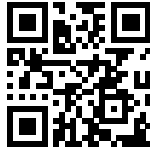
JBL PROPOND GROWTH S



Product information

NEO Index literally means: natural, energy-optimised nutrition. This is based on the ratio of proteins to fats in the food. Looking at the season alone, the fish would only need half as much protein in winter (2:1) as in summer (4:1). But because not only the season (meaning the water temperature), but also the size and age of the fish, and food function (e.g. growth food = ProPond Growth) play determining roles, the der NEO index has been developed to deal with all these factors in one. The fish's living conditions are also considered with the NEO index and factored in the special FunctionFood varieties.

Your young koi will also grow without growth food (JBL ProPond Growth), but they will grow more slowly and their body will not develop the beautiful shape it does when using this food. JBL ProPond Color will bring out the colours of your fish more distinctively and also make sure that the fish will retain their beautiful colours after purchase - because retailers generally feed this food to show off their fish in their most beautiful colours. It will also help younger fish (mostly two years old) to develop their colours properly when they are 3-5 years old. If you regularly feed your fish with ProPond Color their colours will show up more intensely, even at an older age.



| Further information | |
|-----------------------|---|
| FAQ | ✓ |
| Blog | ✓ |
| Press | ✓ |
| Laboratory/calculator | ✗ |
| Worth reading | ✓ |
| Spare parts | ✗ |
| Video | ✓ |
| GarantiePlus | ✗ |
| Instructions | ✗ |
| QR code |  |





JBL PROPOND GROWTH S

Product details

| Article data | | |
|--------------------------|---|---|
| Product name | JBL PROPOND GROWTH S 1.3 kg | JBL PROPOND GROWTH S 2.5 kg |
| Art. No. | 4129300 | 4129400 |
| EAN number | 4014162412935 | 4014162412942 |
| EAN as barcode |  |  |
| Weight | 1,3 kg | 2,5 kg |
| Size | 3 l | 6 l |
| Expiry months | 36 | 36 |
| RRP incl. VAT | 39,78 € | 66,32 € |
| Base price | 30,6 € | 26,53 € |
| Nominal filling quantity | 1.3 kg | 2.5 kg |
| Base quantity | 1 kg | 1 kg |
| Gross weight | 1338 g | 2554 g |
| Net weight | 1300 g | 2500 g |
| Weight change | - | - |

| Disposal | | |
|-------------------------|-----------------------------|-----------------------------|
| Product name | JBL PROPOND GROWTH S 1.3 kg | JBL PROPOND GROWTH S 2.5 kg |
| Art. No. | 4129300 | 4129400 |
| Green dot | ✓ | ✓ |
| Group electronic waste | - | - |
| Disposal weight | - | - |
| Battery type | - | - |
| Battery return | - | - |
| Battery rechargeable | - | - |
| Disposal weight battery | - | - |
| Non-returnable glass | - | - |
| PPK | - | - |
| Plastic small | 38 g | - |
| Plastic large | - | 54 g |
| Disposal weight metal | 0 g | 0 g |

| Features | | |
|-------------------|---|---|
| Product name | JBL PROPOND GROWTH S 1.3 kg | JBL PROPOND GROWTH S 2.5 kg |
| Art. No. | 4129300 | 4129400 |
| Animal species | Goldfish, Koi, Veiltails | Goldfish, Koi, Veiltails |
| Animal size | 15 - 35 cm | 15 - 35 cm |
| Animal age group | Small koi | Small koi |
| Volume of habitat | For all ponds | For all ponds |
| Material | You will find details of the materials used under Details & Composition | You will find details of the materials used under Details & Composition |



| Features | | |
|----------------------|--|--|
| Food type | floating pearls | floating pearls |
| Colour | brown | brown |
| Dosage | Feed 1 – 2 times a day, as much as can be eaten within a few minutes | Feed 1 – 2 times a day, as much as can be eaten within a few minutes |
| Transport conditions | - | - |



JBL PROPOND GROWTH S

| Electronic label / illuminant | | |
|-------------------------------|-----------------------------|-----------------------------|
| Product name | JBL PROPOND GROWTH S 1.3 kg | JBL PROPOND GROWTH S 2.5 kg |
| Art. No. | 4129300 | 4129400 |
| Ambient temperature | - | - |
| Start time | - | - |
| Mercury | - | - |
| Tube length | - | - |
| Service life | - | - |
| Lumen | - | - |
| CRI value | - | - |
| Dimmable | - | - |
| Switching cycles | - | - |
| PAR value | - | - |
| Energy efficiency class | - | - |
| UV-A | - | - |
| UV-B | - | - |
| UV-C | - | - |
| Colour temperature | - | - |
| Base designation | - | - |

| Technical data | | |
|-------------------------------|-----------------------------|-----------------------------|
| Product name | JBL PROPOND GROWTH S 1.3 kg | JBL PROPOND GROWTH S 2.5 kg |
| Art. No. | 4129300 | 4129400 |
| Range in litres | - | - |
| Range from - to | - | - |
| Range in days | - | - |
| Range tank length | - | - |
| Output in watts | - | - |
| Output per hour | - | - |
| Output per day | - | - |
| Height | - | - |
| Length | - | - |
| Width | - | - |
| Diameter | - | - |
| Voltage | - | - |
| For | - | - |
| T8 26mm (watt) | - | - |
| T5 16mm (watt) | - | - |
| Size | - | - |
| Content for | - | - |
| Filter container volume | - | - |
| Volume filter media | - | - |
| Hose connections pressure/out | - | - |
| Hose connections suction/in | - | - |
| Delivery head | - | - |

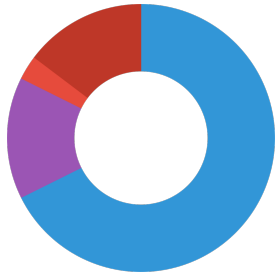




JBL PROPOND GROWTH S

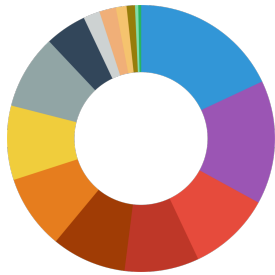
| | |
|------------------|--|
| Food type | floating pearls |
| Sub product type | complete food for ornamental fish |
| Dosing | Feed 1 - 2 times a day, as much as can be eaten within a few minutes |

Analytical components



| | |
|---------------|------|
| Crude protein | 46 % |
| Fat content | 10 % |
| Crude fibre | 2 % |
| Crude ash | 10 % |

Composition



| |
|---------------|
| rice meal |
| salmon meal |
| soy bean meal |
| wheat germs |
| shrimp meal |
| wheat gluten |
| spirulina |
| octopus meal |
| fish oil |
| yeast extract |
| seaweed meal |
| minerals |
| green meal |
| lysine |
| methionine |

Additives

| |
|-------------|
| Colourings |
| Astaxanthin |

| Vitamins, provitamins and other chemically defined substances having a similar effect (per 1000 g) | |
|--|-------------|
| Vitamin A | 25000 I. E. |
| Vitamin D ₃ | 2000 I. E. |
| Vitamin E | 300 mg |
| Vitamin C(stable) | 200 mg |



Additional information for the specialist trade sector

| Article data | | |
|----------------------|-----------------------------|-----------------------------|
| Product name | JBL PROPOND GROWTH S 1.3 kg | JBL PROPOND GROWTH S 2.5 kg |
| Art. No. | 4129300 | 4129400 |
| VAT | 7% | 7% |
| Sales unit (SU) | 1 | 1 |
| Volume packaging | 4.37l | 8.4l |
| Dimensions (l/w/h) | 70 mm/195 mm/320 mm | 85 mm/250 mm/395 mm |
| Layer | 56 | 28 |
| Pallet | 280 | 140 |
| Category of products | 1 | 1 |
| Customs tariff | 23099041 | 23099041 |
| Country of origin | DE | DE |
| Type of packaging | Bag / sack | Bag / sack |

| PU 1 data | | |
|------------------|-----------------------------|-----------------------------|
| Product name | JBL PROPOND GROWTH S 1.3 kg | JBL PROPOND GROWTH S 2.5 kg |
| Art. No. | 4129300 | 4129400 |
| PU 1 material | cardboard gr | cardboard gr |
| PU 1 weight | 430 g | 490 g |
| PU 1 length | 395 mm | 360 mm |
| PU 1 width/depth | 295 mm | 265 mm |
| PU 1 height | 285 mm | 330 mm |

| PU 2 data | | |
|------------------|-----------------------------|-----------------------------|
| Product name | JBL PROPOND GROWTH S 1.3 kg | JBL PROPOND GROWTH S 2.5 kg |
| Art. No. | 4129300 | 4129400 |
| PU 2 material | None | None |
| PU 2 weight | - | - |
| PU 2 length | - | - |
| PU 2 width/depth | - | - |
| PU 2 height | - | - |

| Trade data | | |
|-------------------|-----------------------------|-----------------------------|
| Product name | JBL PROPOND GROWTH S 1.3 kg | JBL PROPOND GROWTH S 2.5 kg |
| Art. No. | 4129300 | 4129400 |
| Till receipt text | PP Growth S1.3 | PP Growth S2.5 |
| Shelf placement | - | - |